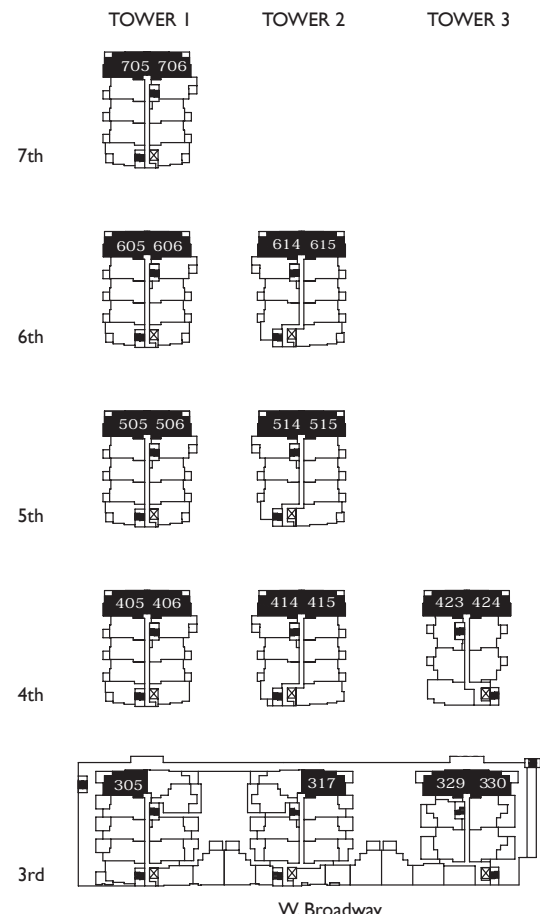
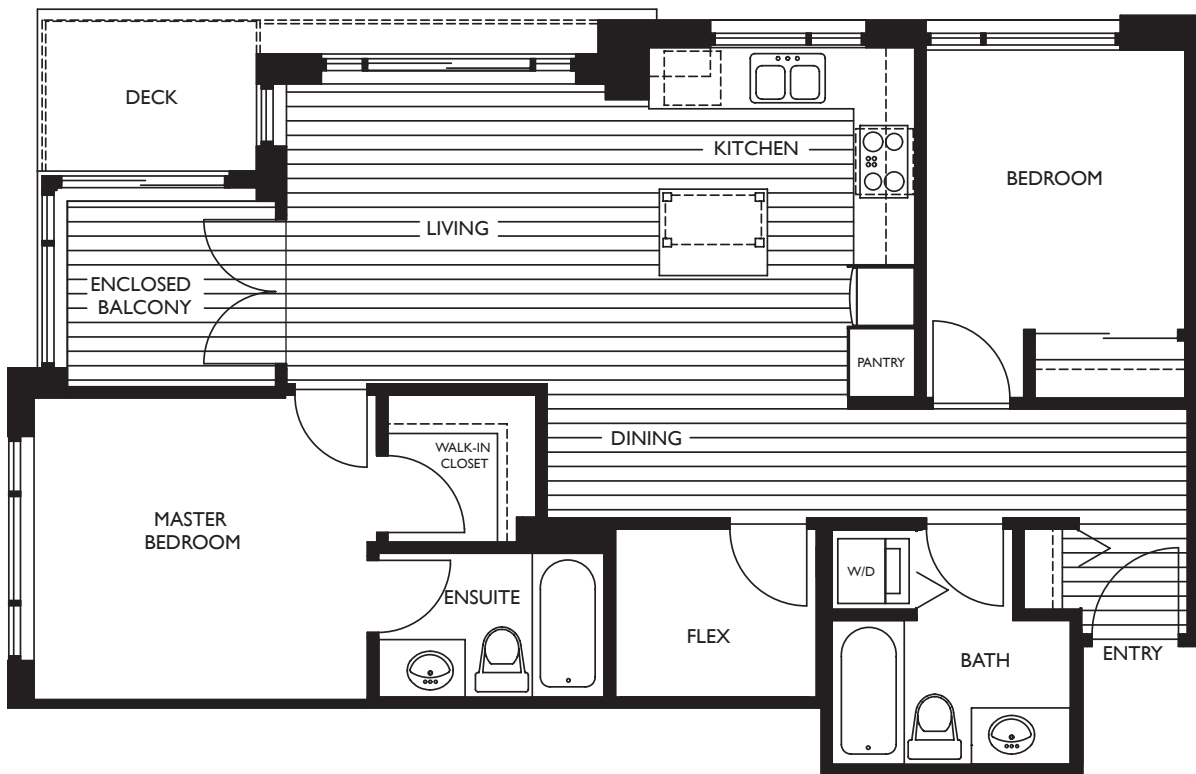


# Type A1

2 bedroom, 2 bath + flex

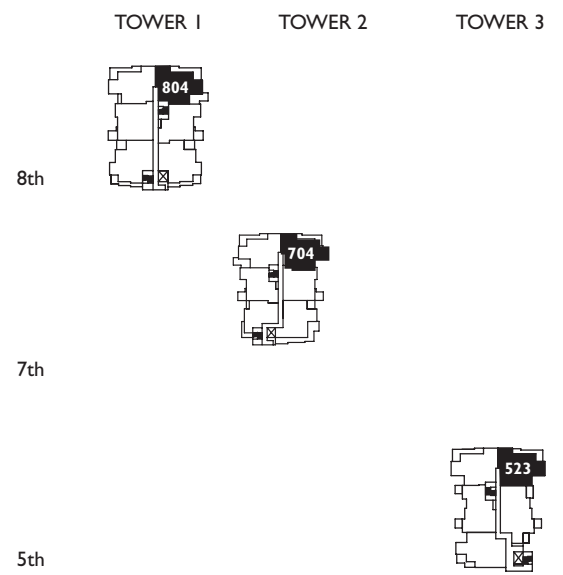
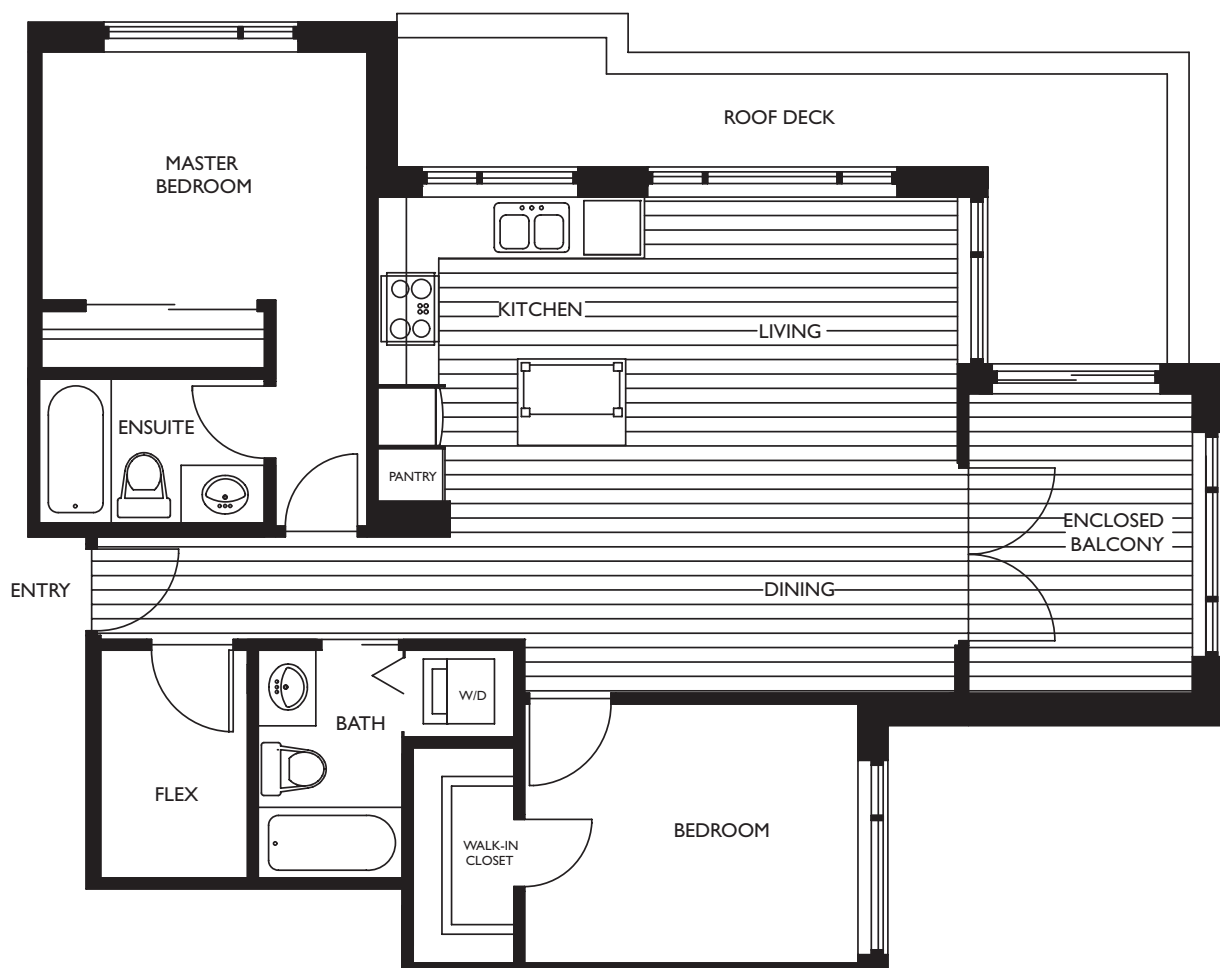
908 – 916 s.f.



# Type PHAI

2 bedroom, 2 bath + flex

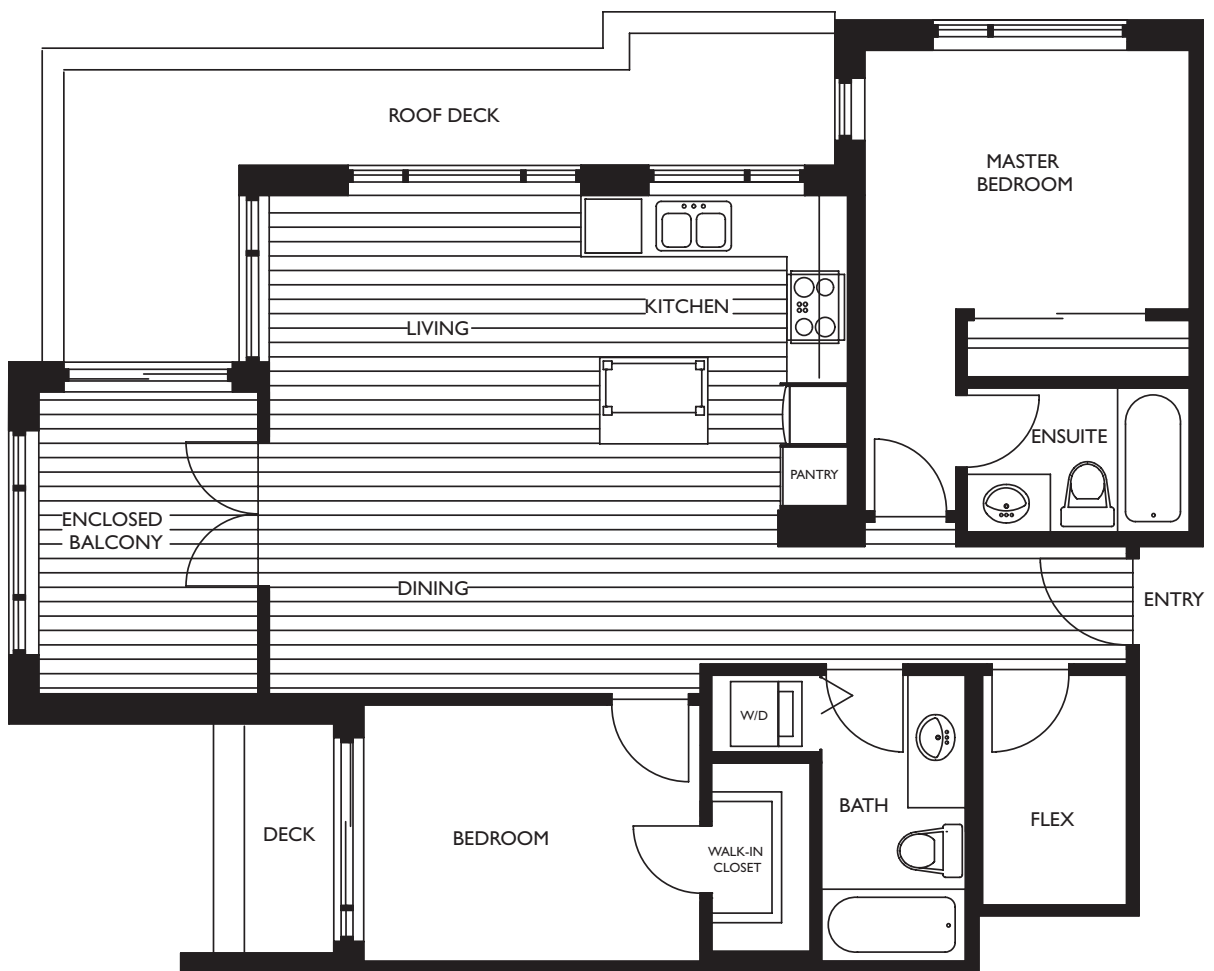
994 – 1002 s.f.



## Type PHA2

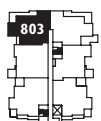
2 bedroom, 2 bath + flex

987 s.f.



TOWER 1

TOWER 2



8th



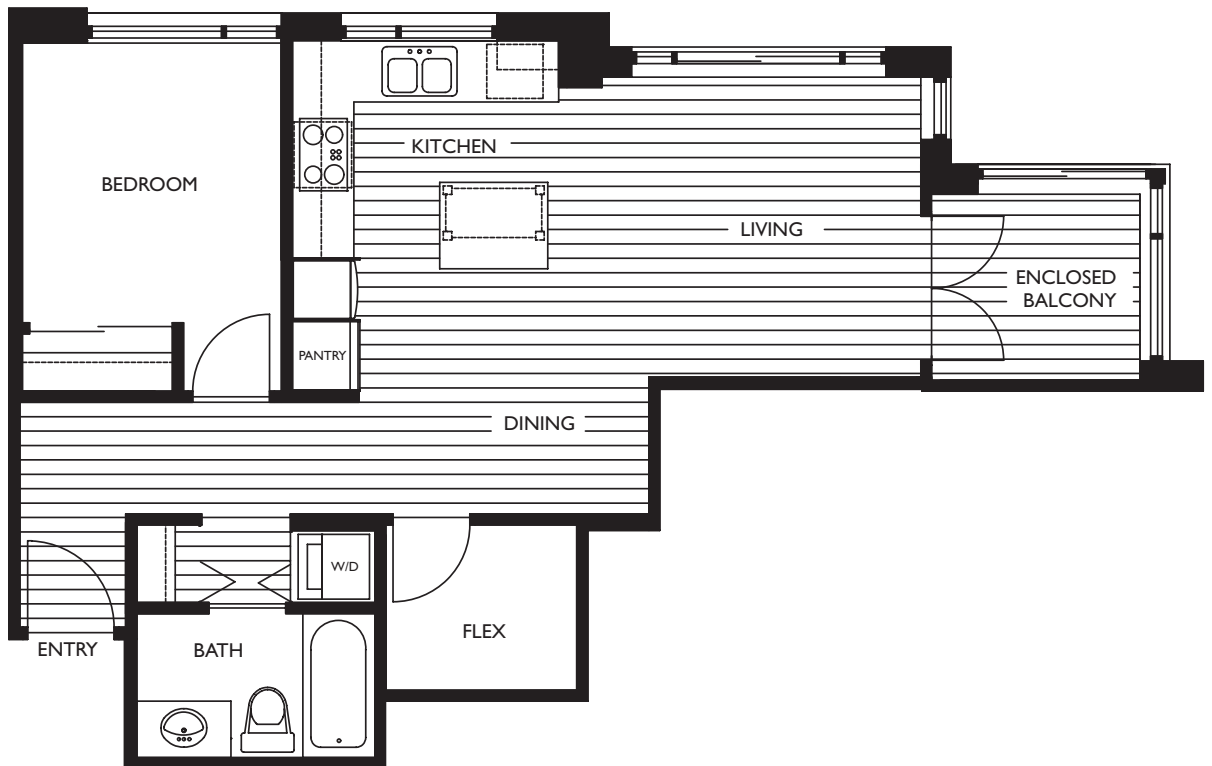
7th



W. Broadway

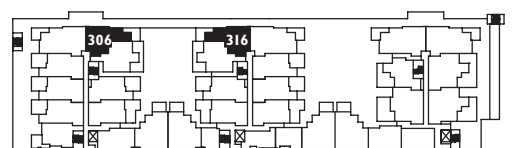
## Type A3

1 bedroom + flex  
688 s.f.



3rd

TOWER 1      TOWER 2      TOWER 3

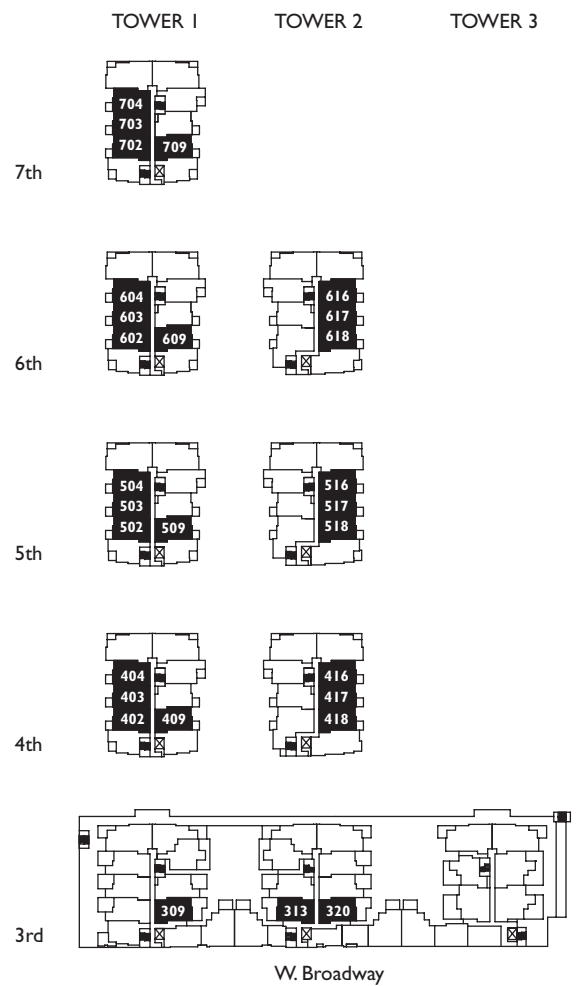
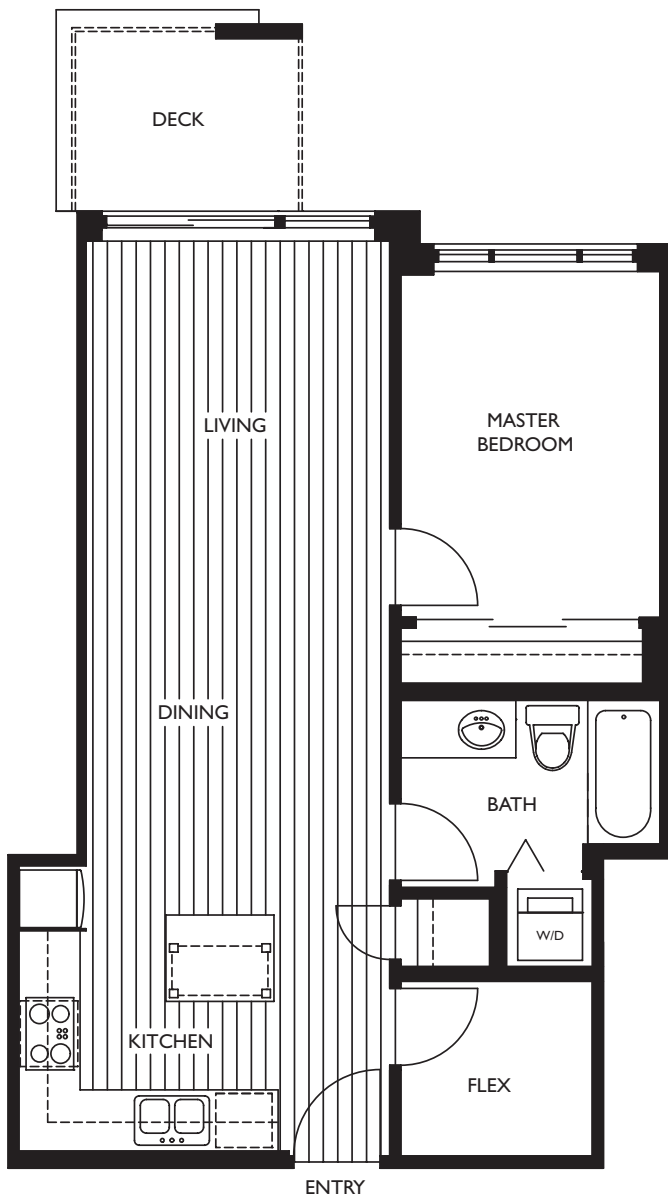


W. Broadway

# Type B1

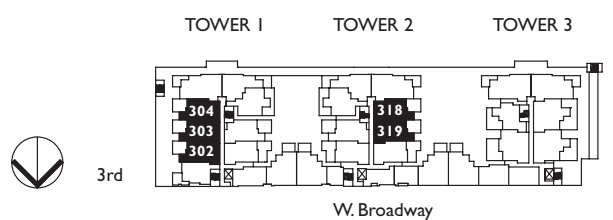
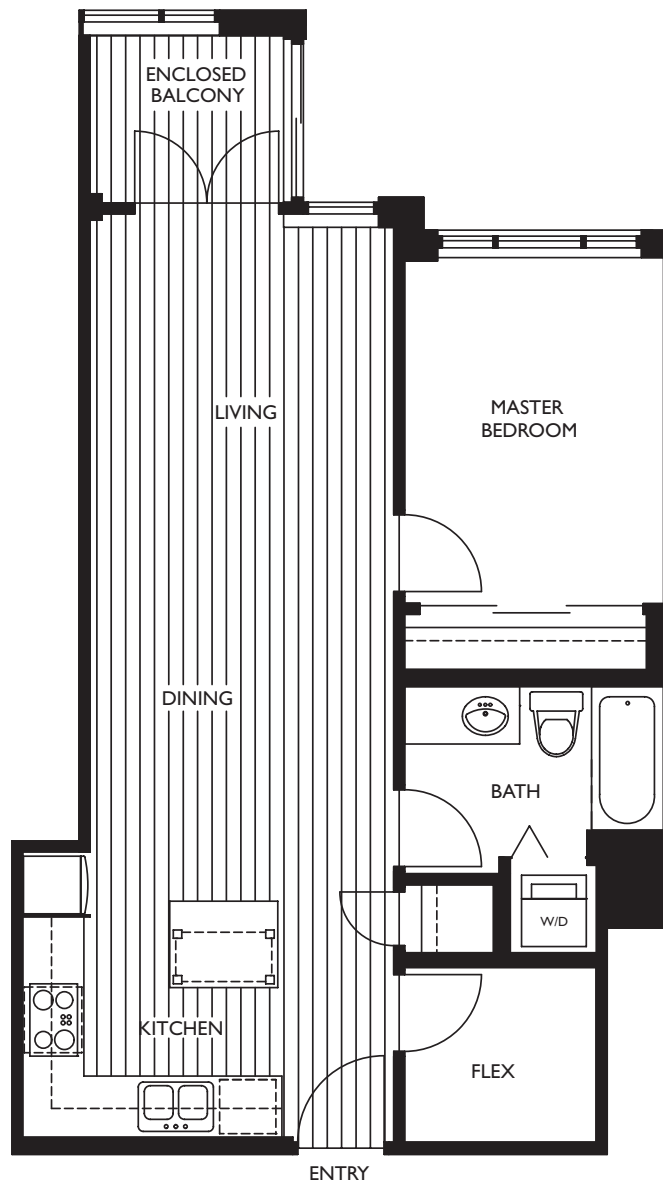
1 bedroom + flex

658 – 665 s.f.



## Type B1e

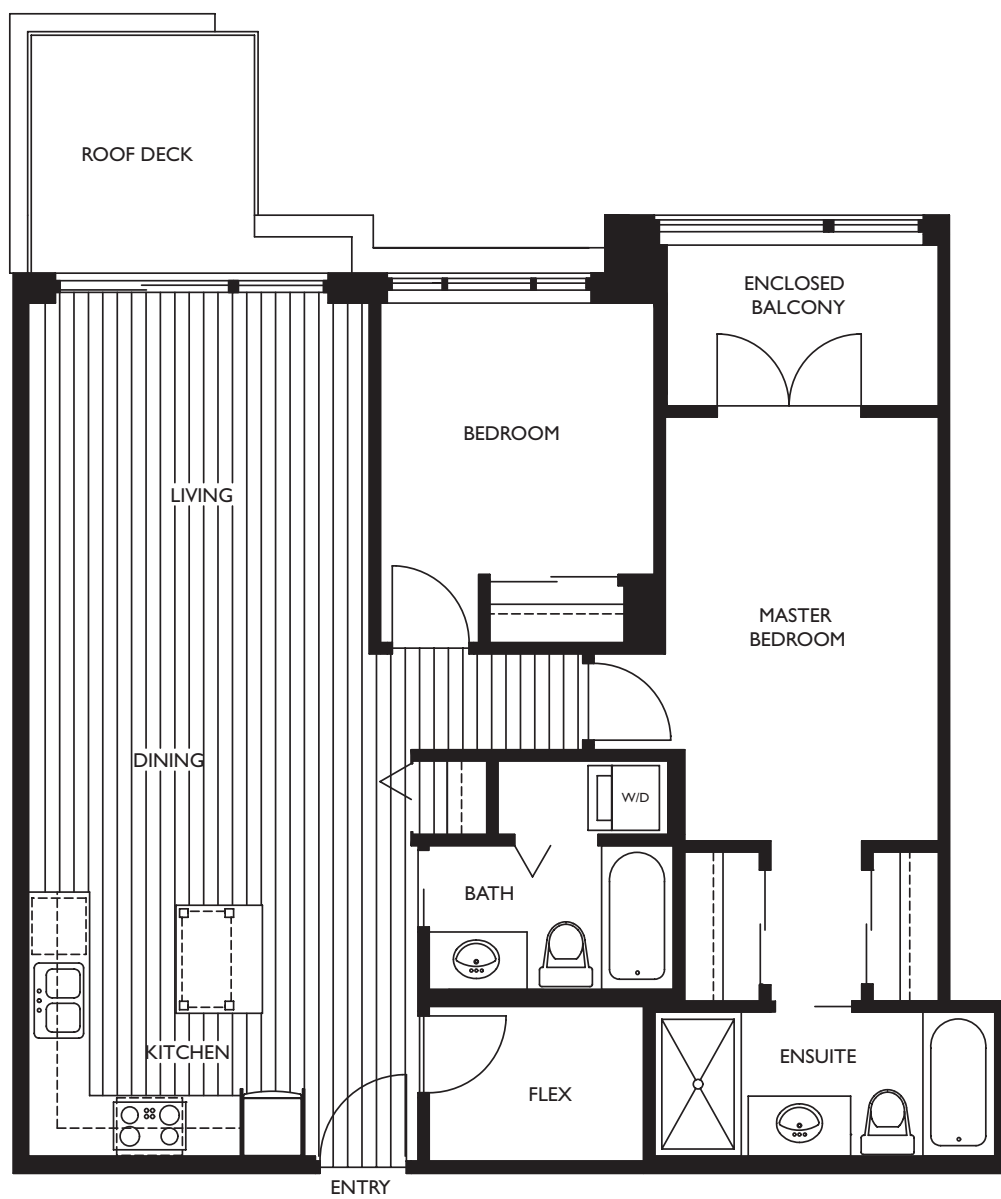
1 bedroom + flex  
715 – 717 s.f.



## Type PHB

2 bedroom, 2 bath + flex

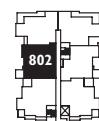
1,026 – 1,029 s.f.



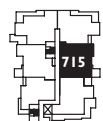
TOWER 1

TOWER 2

8th



7th

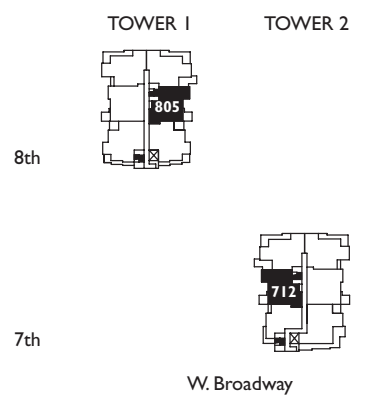
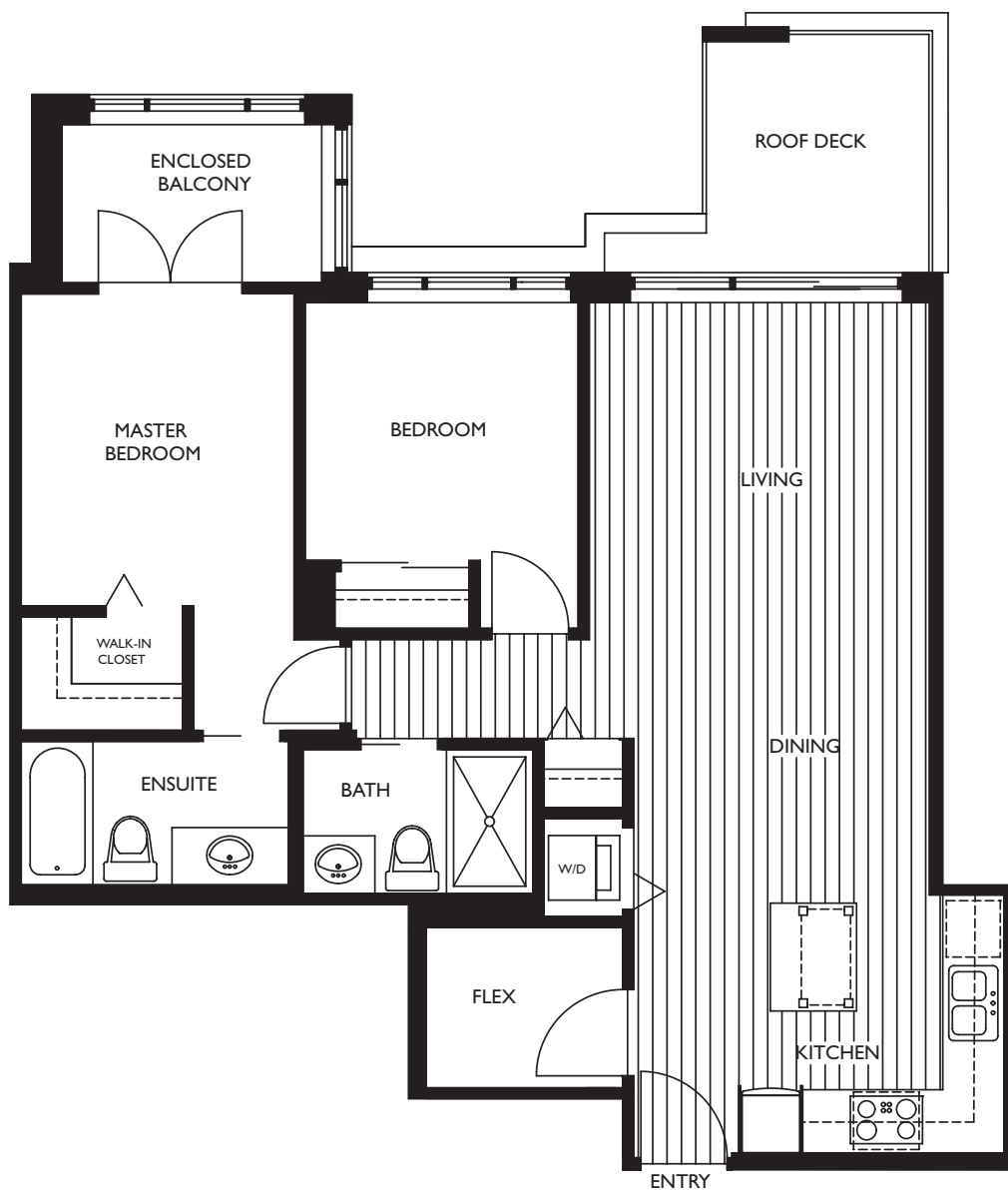


W. Broadway

## Type PHBI

2 bedroom, 2 bath + flex

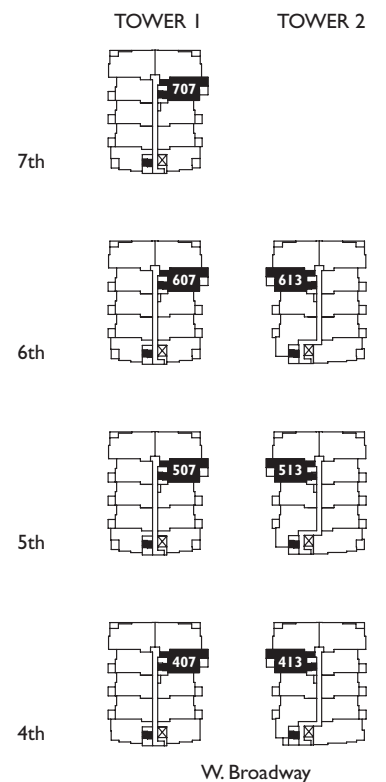
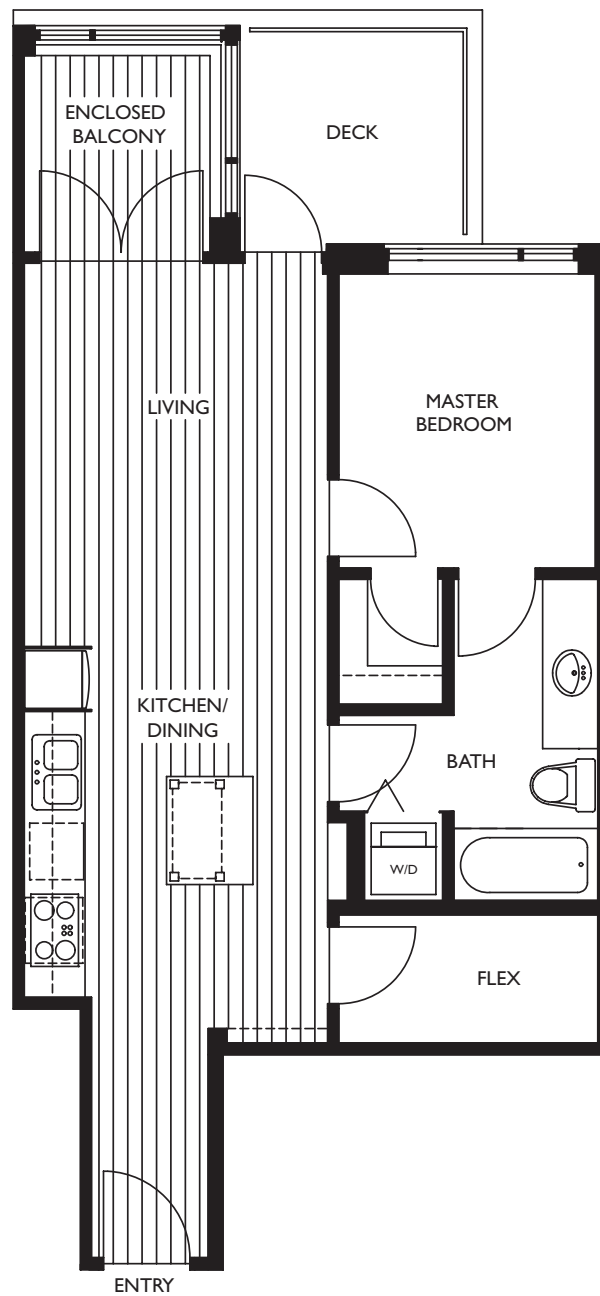
943 – 945 s.f.





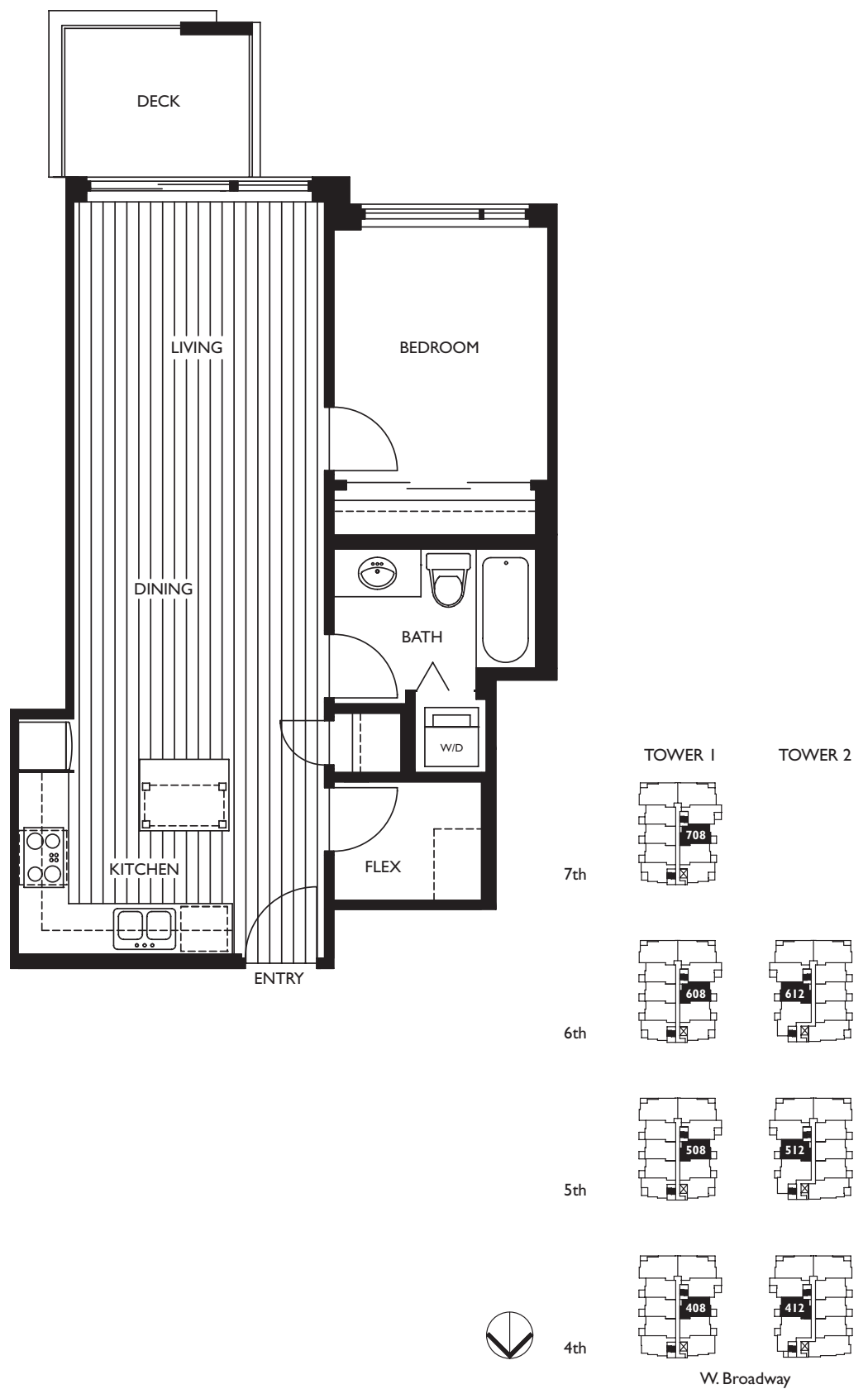
## Type B2

1 bedroom + flex  
673 – 678 s.f.



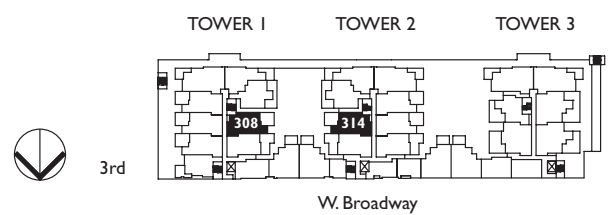
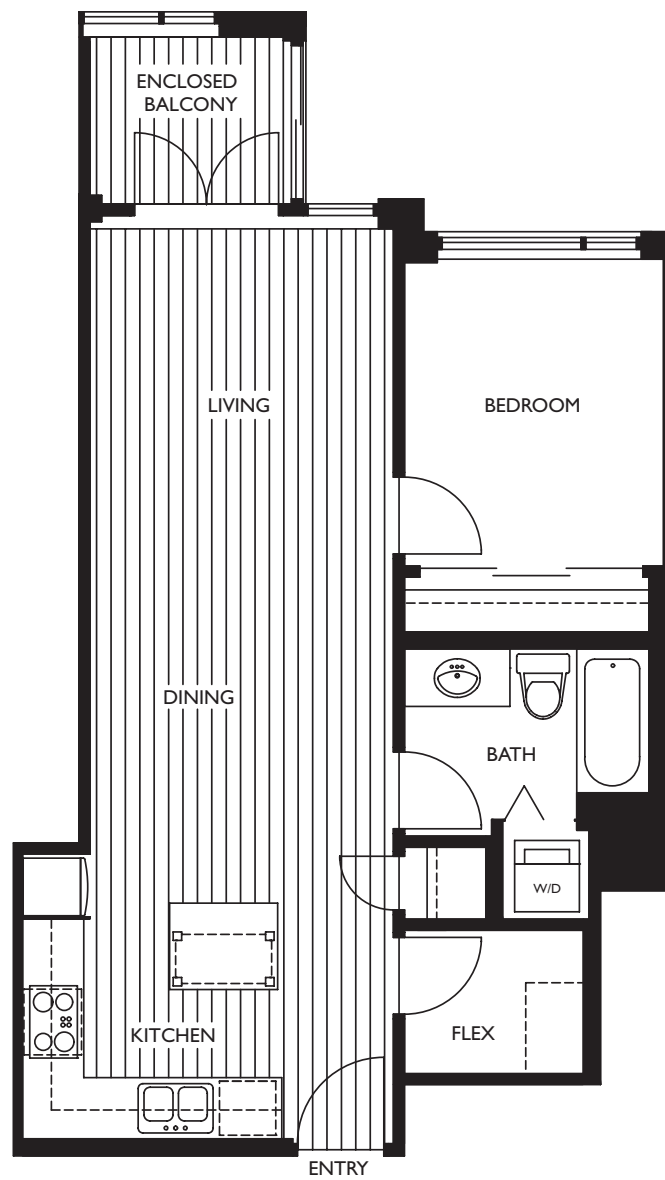
## Type B3

1 bedroom + flex  
644 – 648 s.f.



## Type B3e

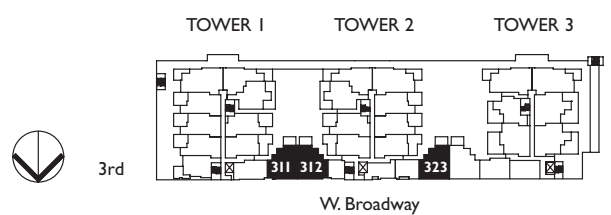
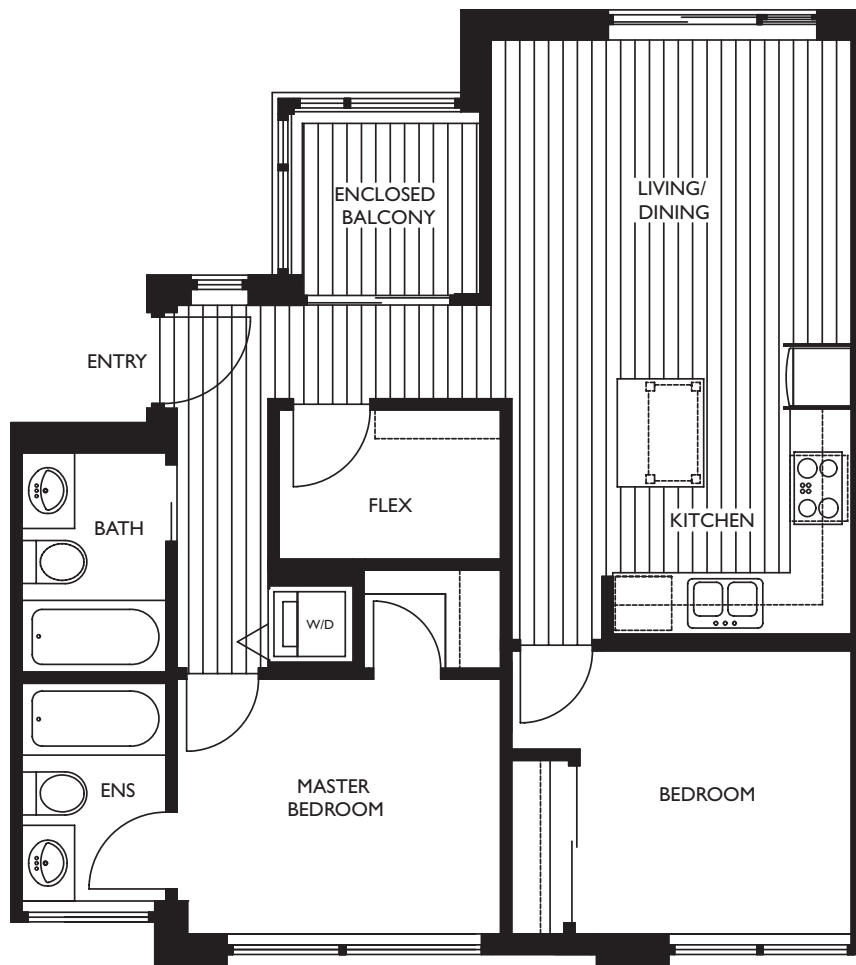
1 bedroom + flex  
700 s.f.



## Type PD-B

2 bedroom, 2 bath + flex

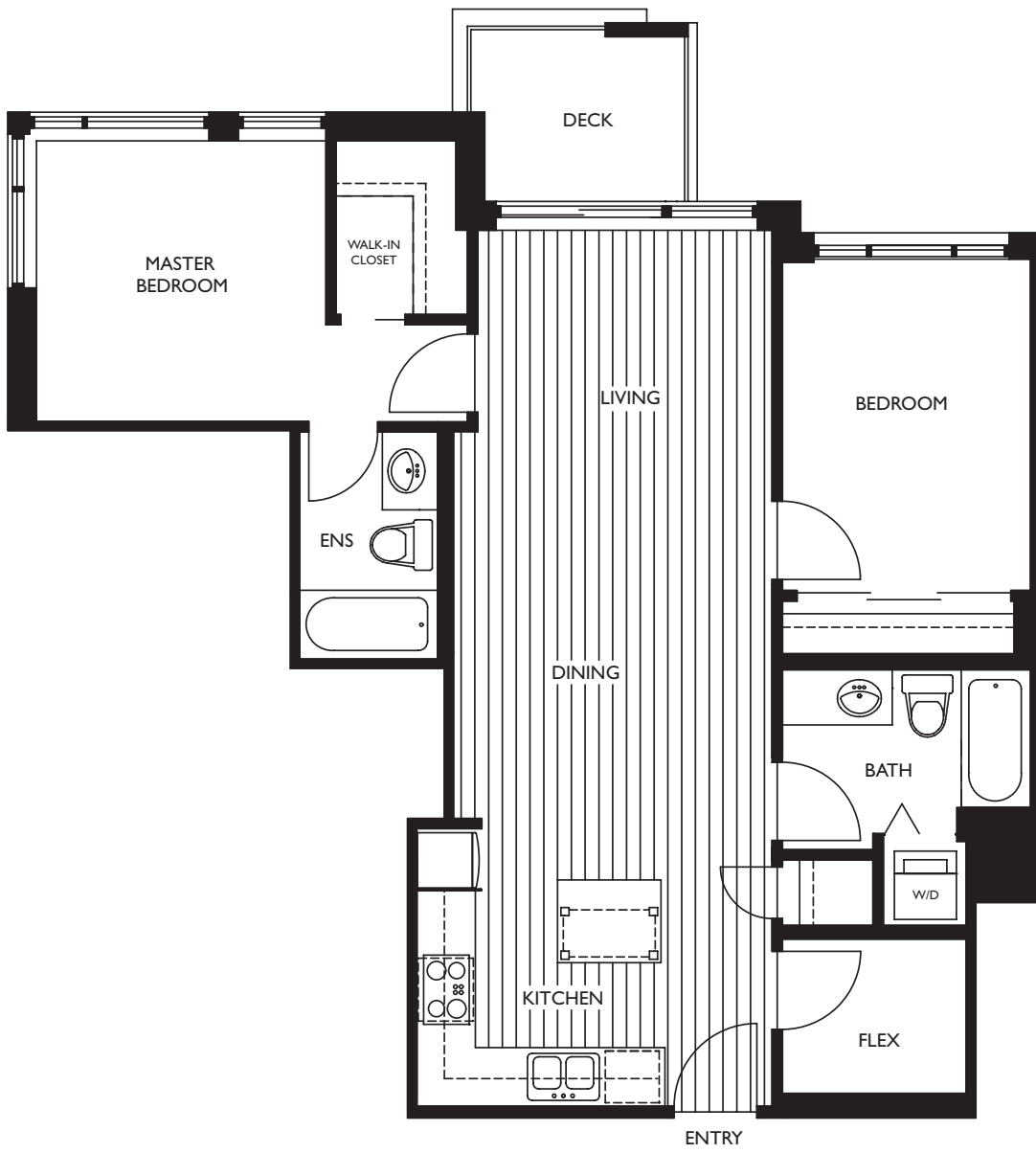
825 – 827 s.f.



# Type D

2 bedroom, 2 bath + flex

915 – 947 s.f.



TOWER 2



6th



5th



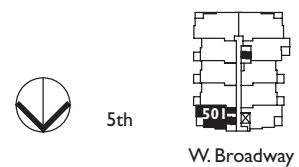
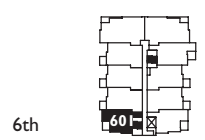
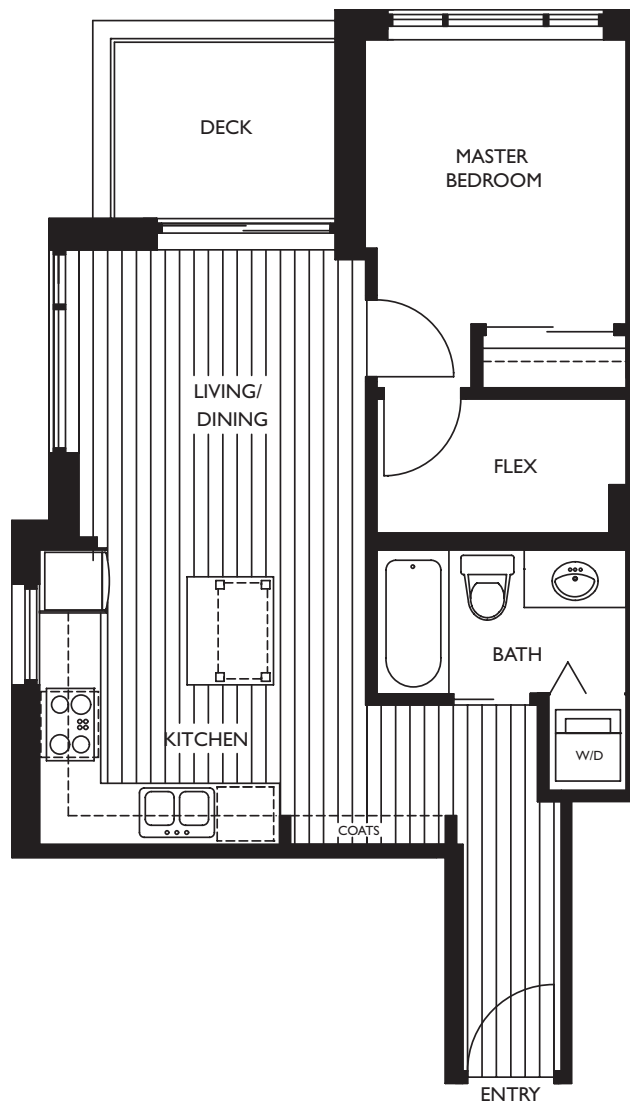
4th



W. Broadway

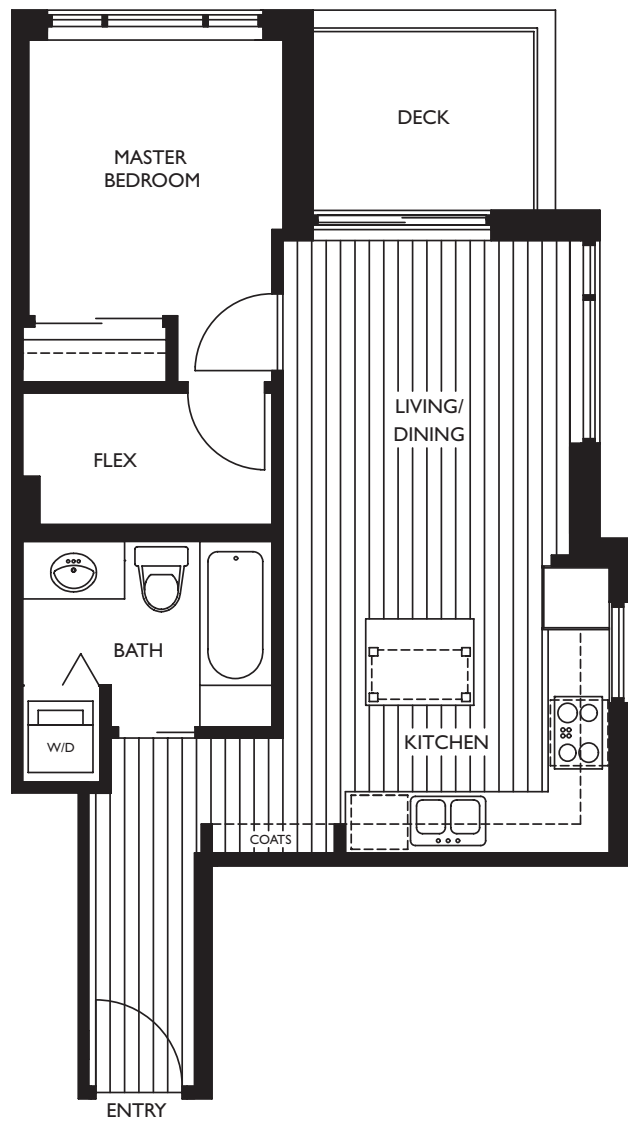
# Type E

1 bedroom + flex  
565 s.f.



# Type E1

1 bedroom + flex  
565 s.f.



TOWER 1



7th



6th



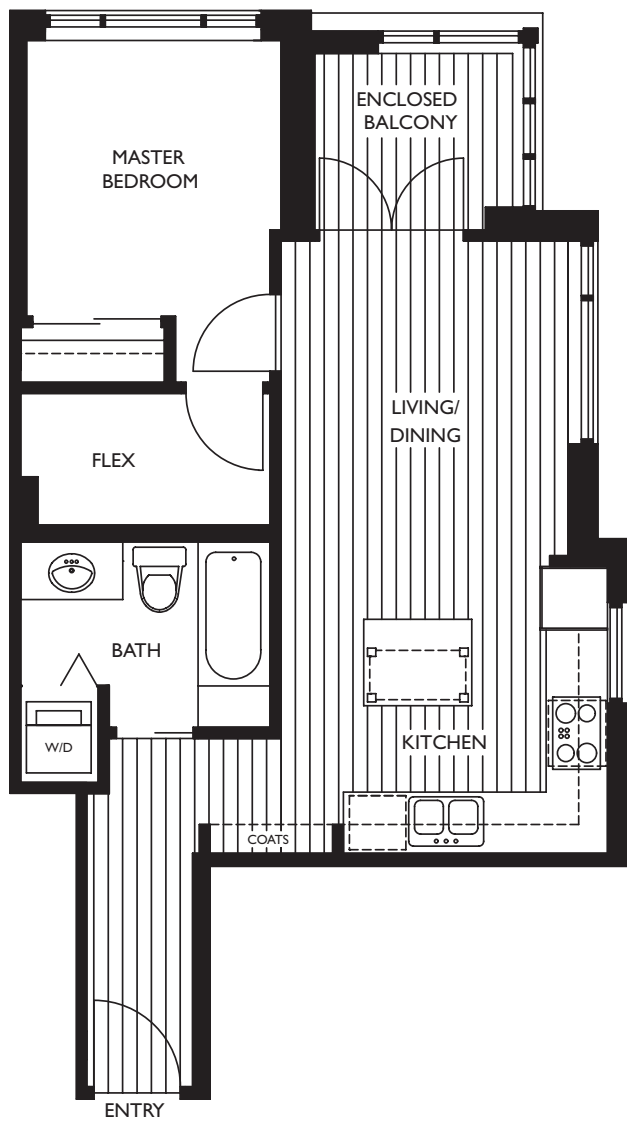
5th



W. Broadway

## Type Ele

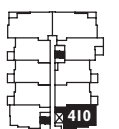
1 bedroom + flex  
624 s.f.



TOWER I



4th



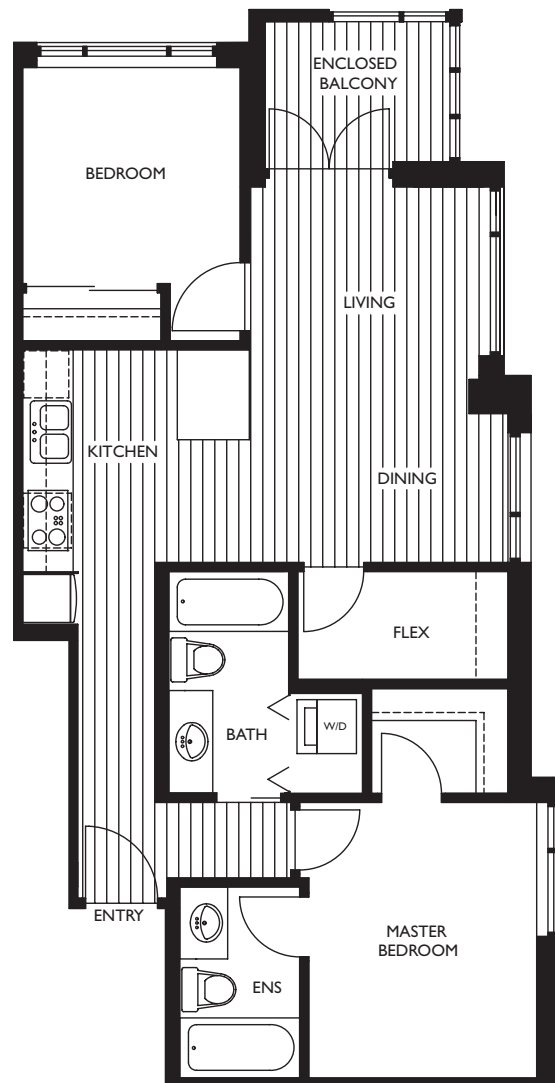
W. Broadway



## Type E2e

2 bedroom, 2 bath + flex

836 s.f.

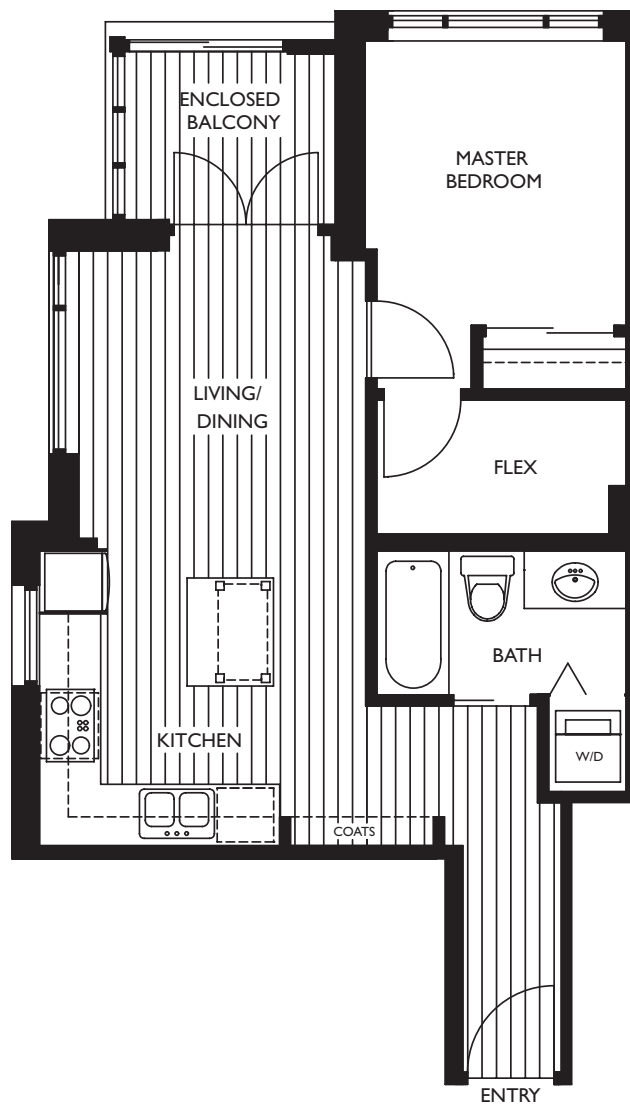


4th



## Type Ee

1 bedroom + flex  
614 – 616 s.f.



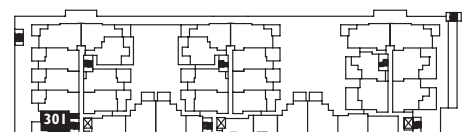
TOWER 1      TOWER 2      TOWER 3



4th



3rd



W. Broadway

## Type PHEI

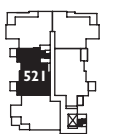
2 bedroom, 2 bath + flex

1,021 s.f.



5th

TOWER 3

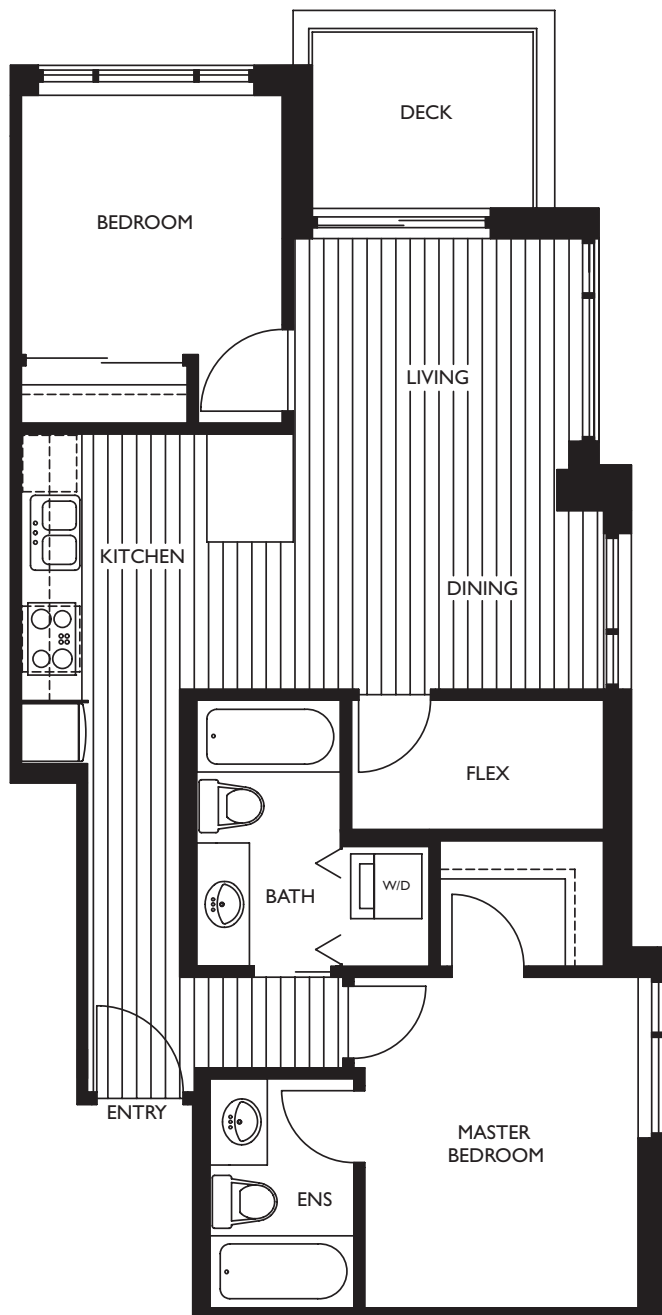


W. Broadway

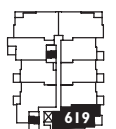
## Type E2

2 bedroom, 2 bath + flex

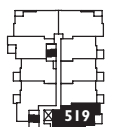
787 s.f.



TOWER 2



6th



5th

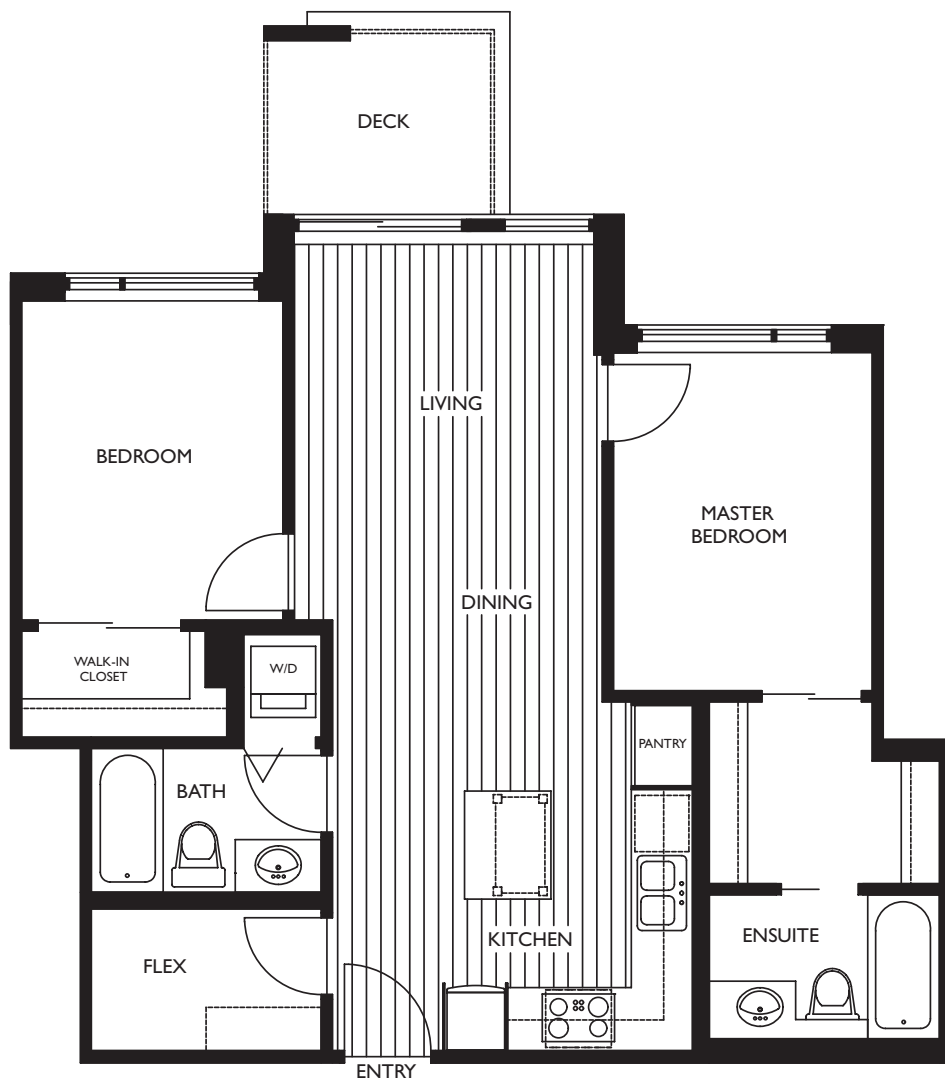


W. Broadway

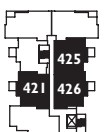
# Type F

2 bedroom, 2 bath + flex

812 – 816 s.f.



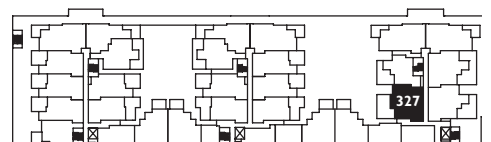
TOWER 3



4th



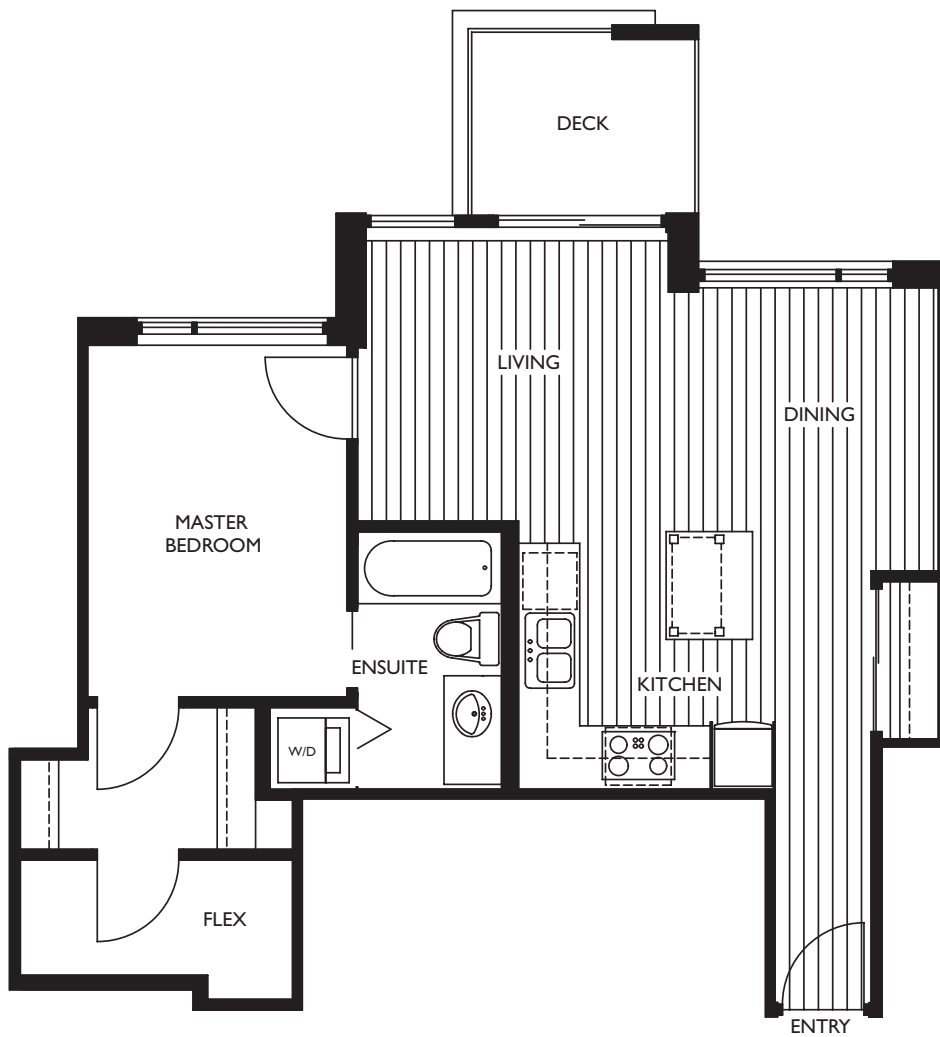
3rd



## Type F2

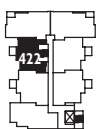
2 bedroom, 1 bath + flex

661 s.f.



4th

TOWER 3

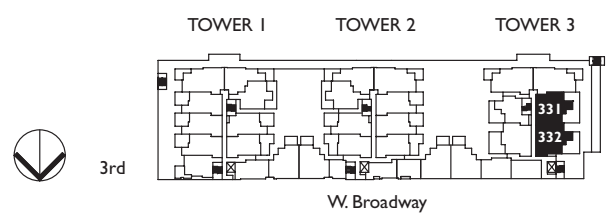
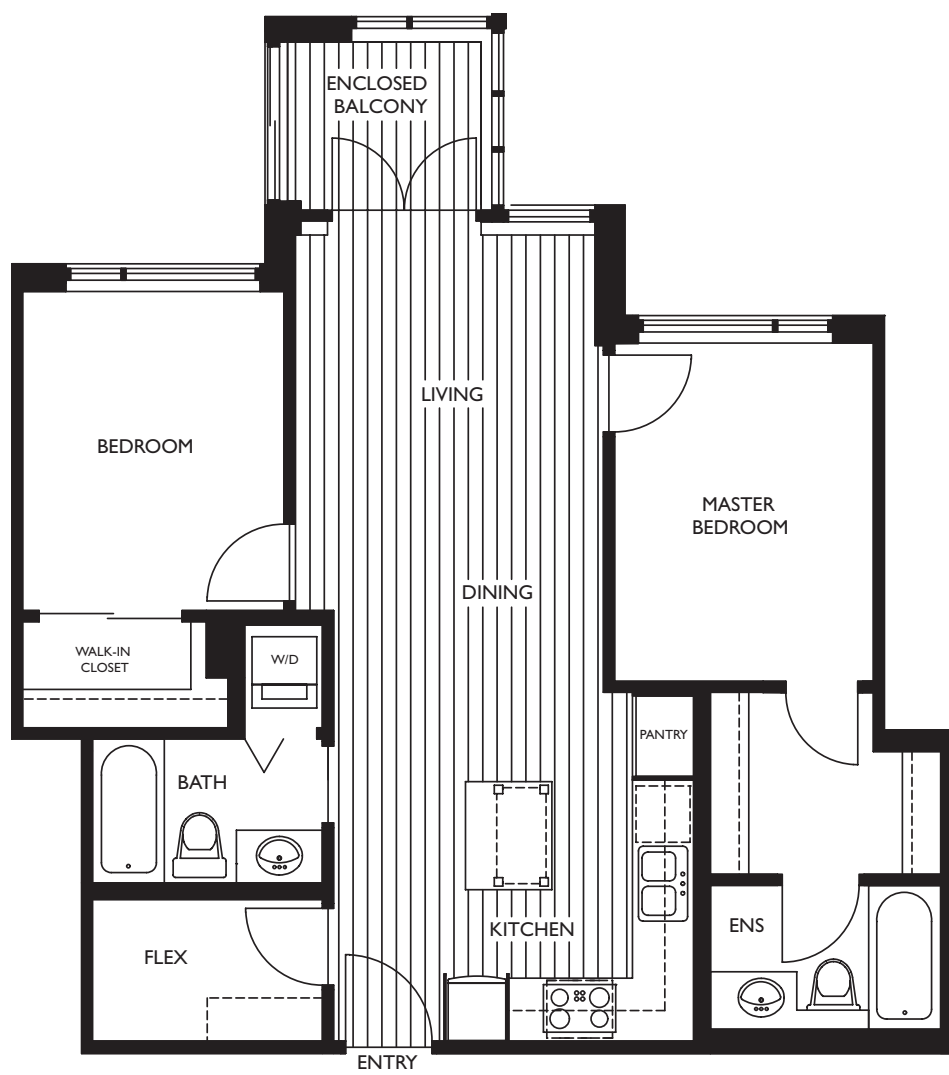


W. Broadway

## Type Fe

2 bedroom, 2 bath + flex

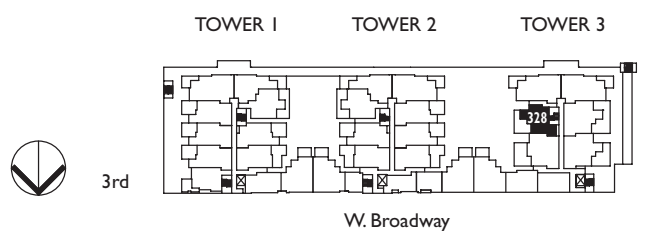
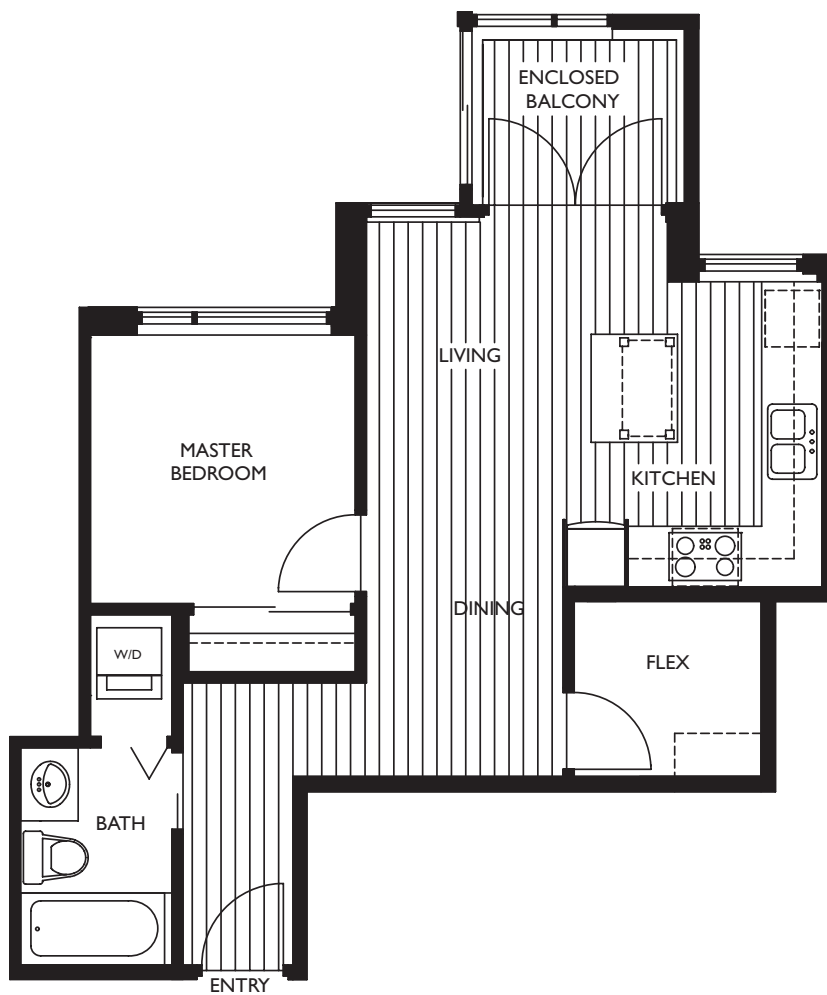
863 – 866 s.f.



## Type F3e

1 bedroom + flex

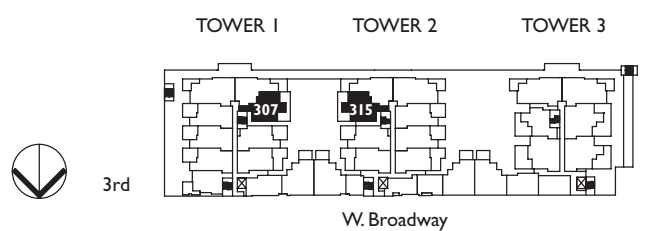
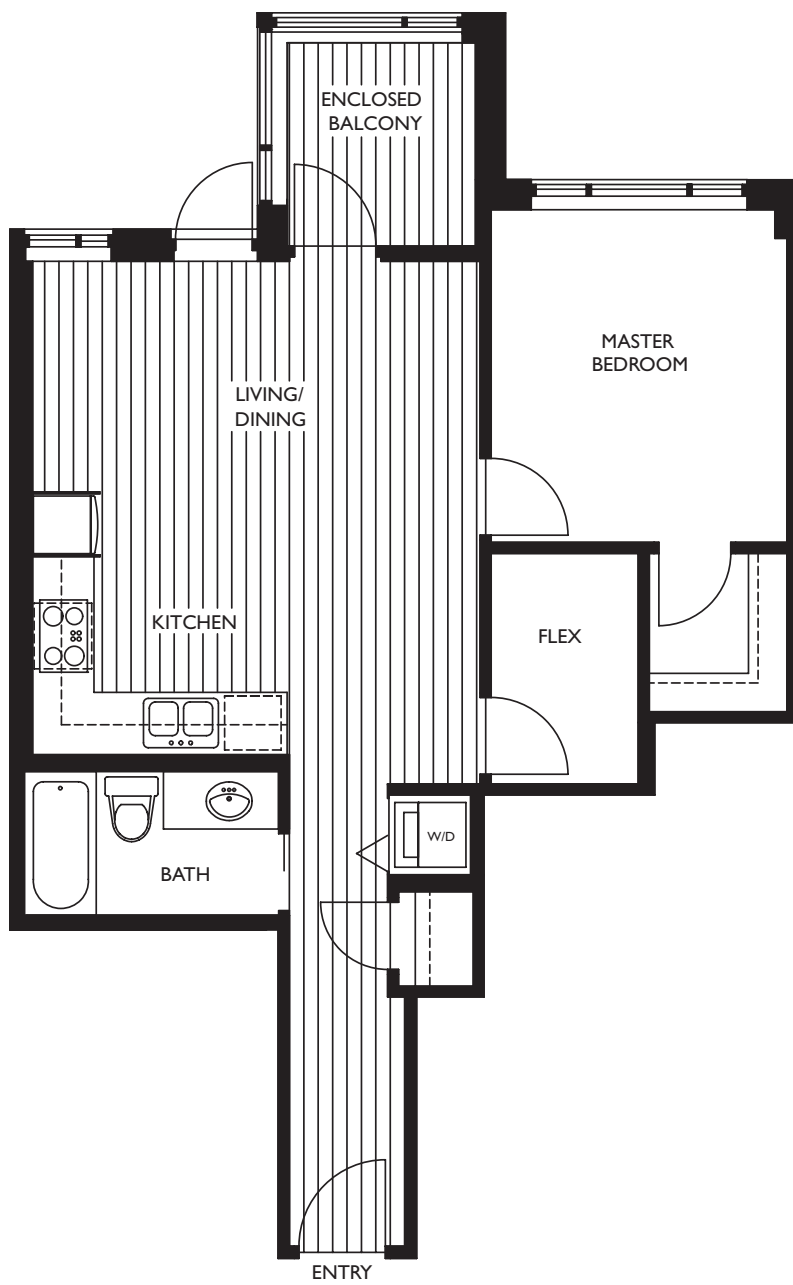
591 s.f.





# Type G

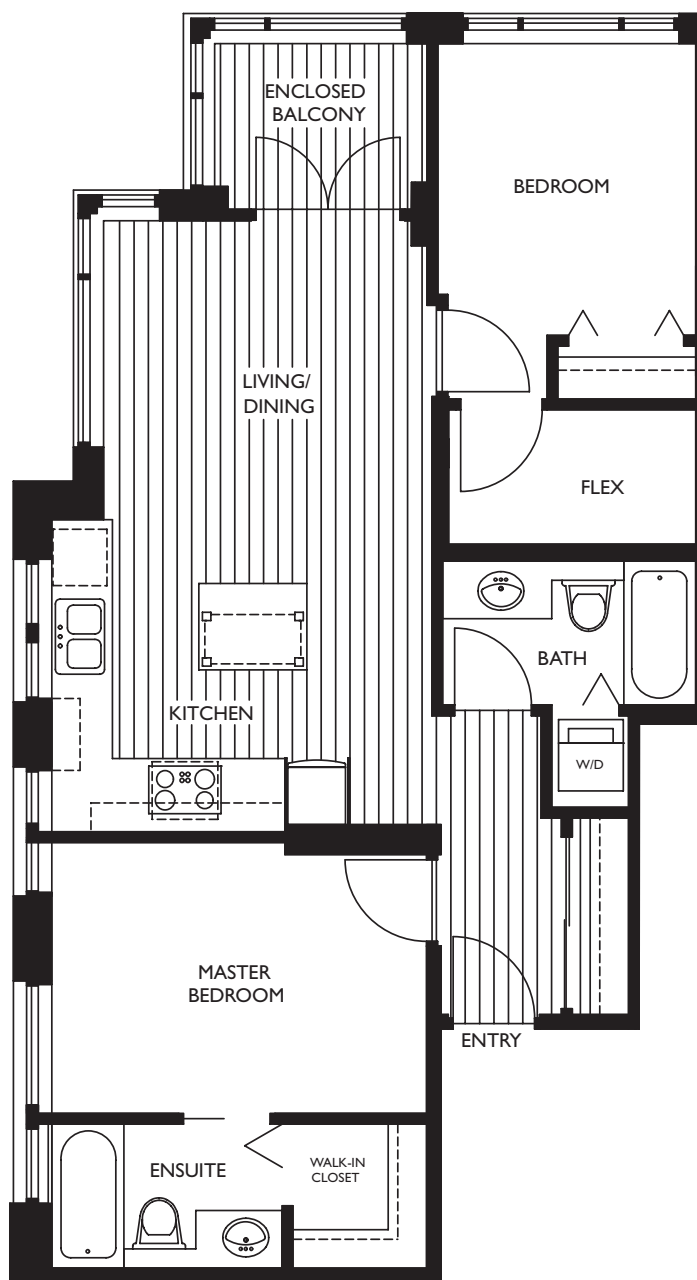
1 bedroom + flex  
721 s.f.



# Type H

2 bedroom, 2 bath + flex

855 s.f.



TOWER 3



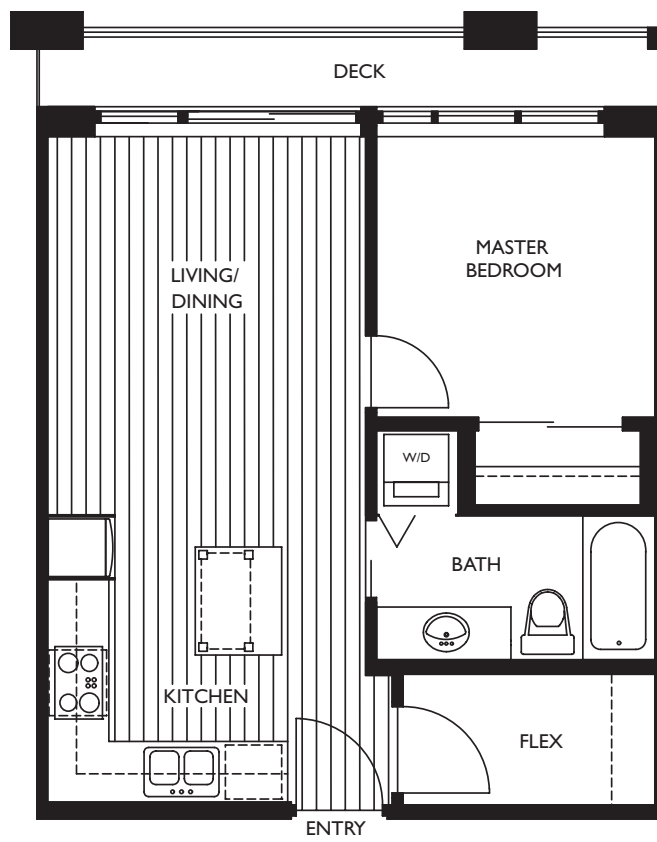
4th



W. Broadway

# Type MA

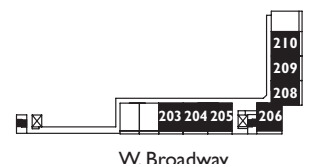
1 bedroom + flex  
510 – 527 s.f.



TOWER 1

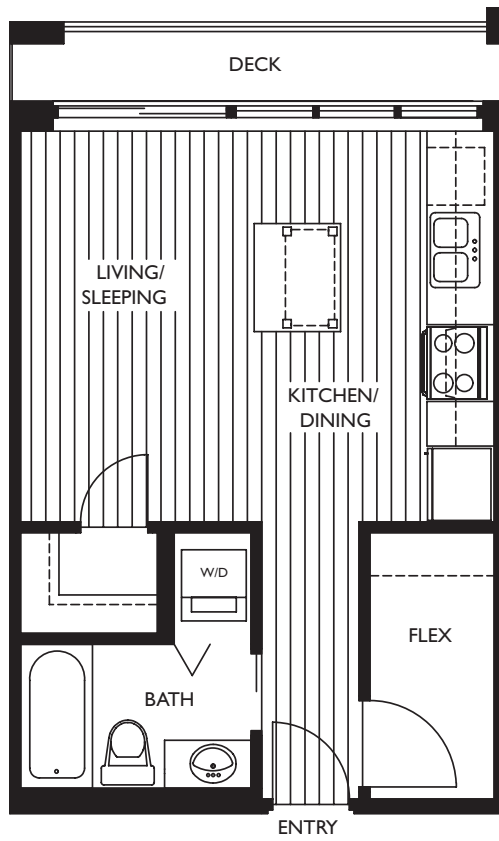
TOWER 2

TOWER 3



# Type MB

Studio + flex  
412 – 414 s.f.



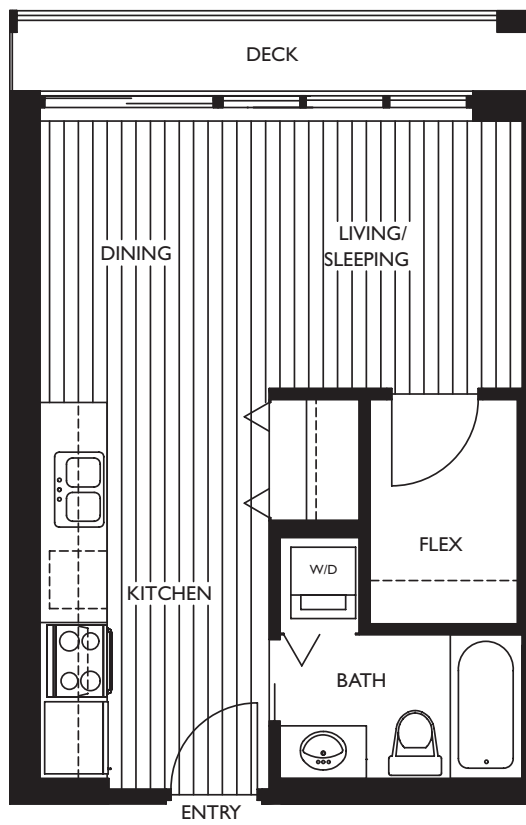
2nd

TOWER 3



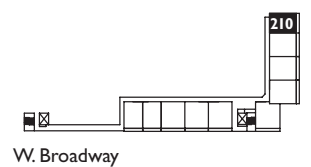
# Type MC

Studio + flex  
412 – 414 s.f.



2nd

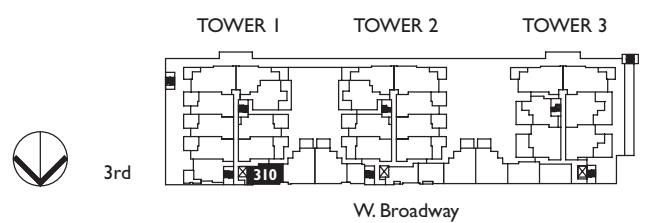
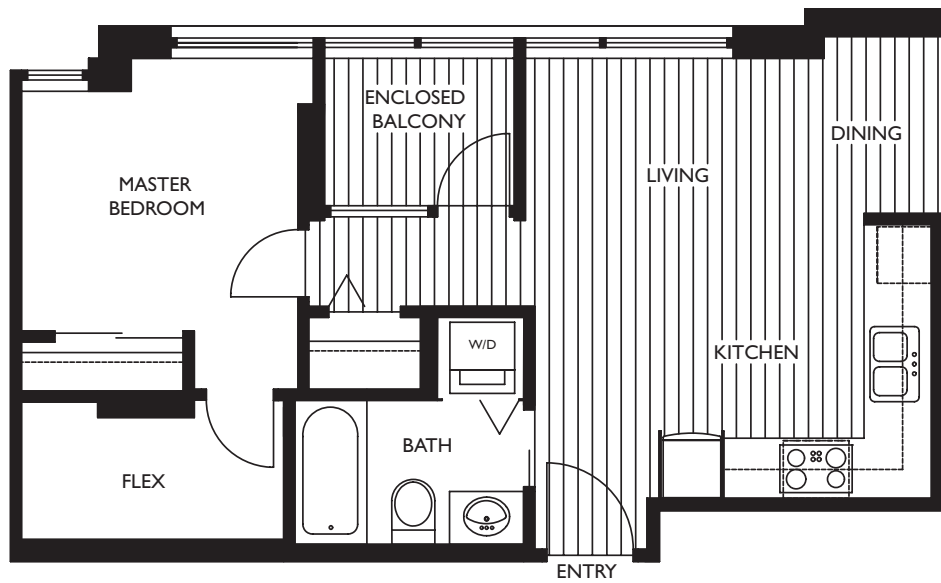
TOWER 3



## Type PD-A

1 bedroom + flex

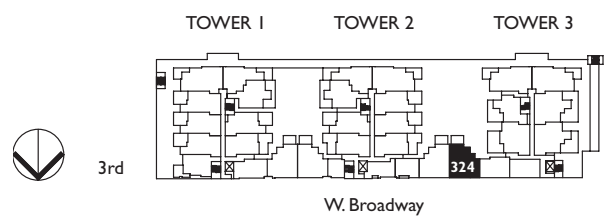
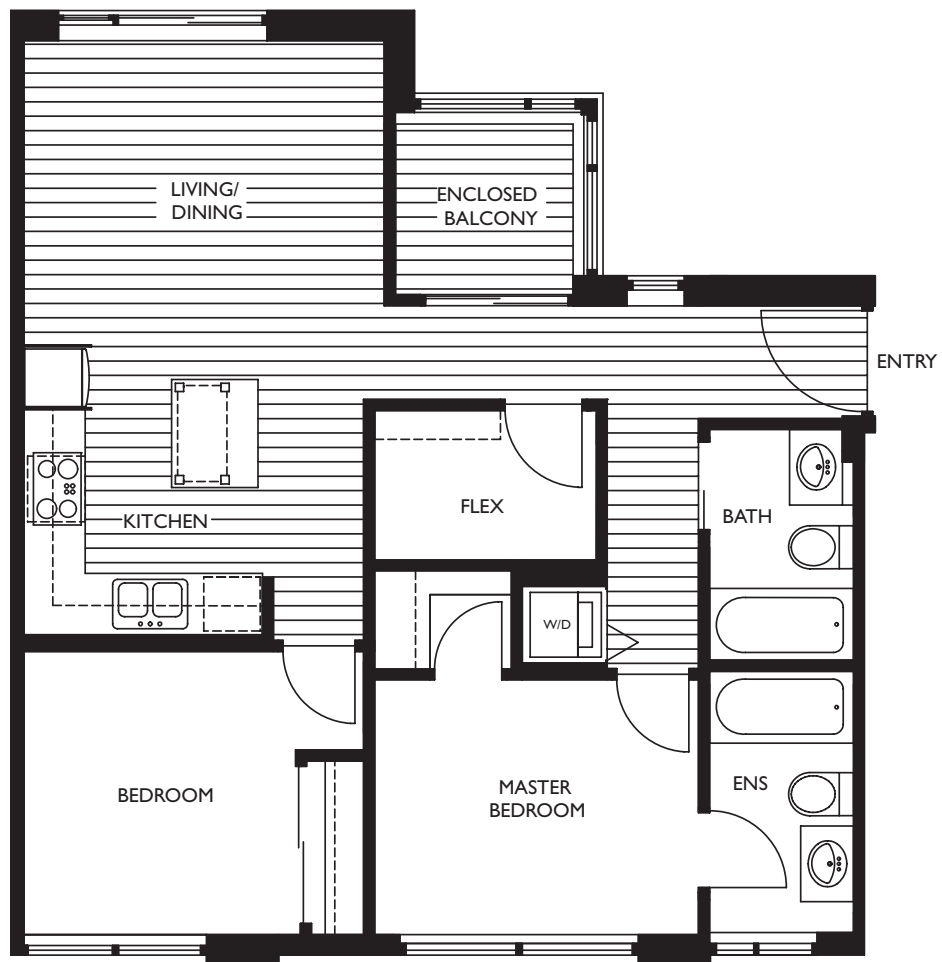
574 s.f.



## Type PD-B1

2 bedroom, 2 bath + flex

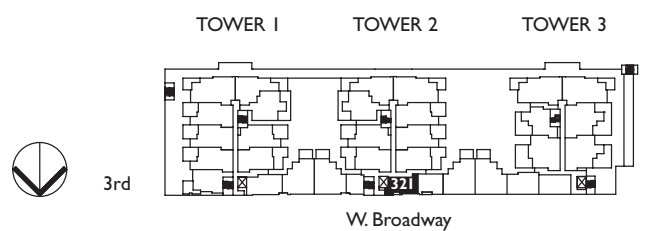
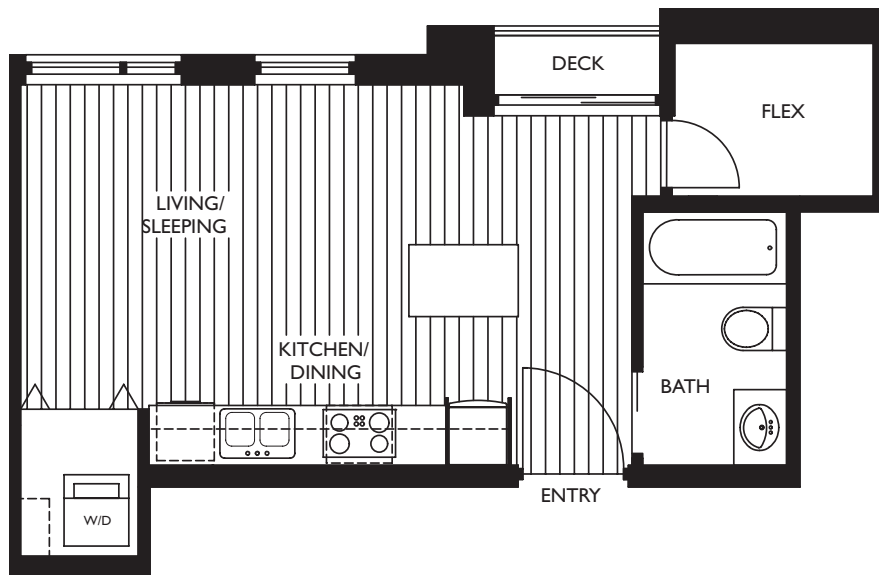
851 s.f.



## Type PD-C

Studio + flex

425 s.f.

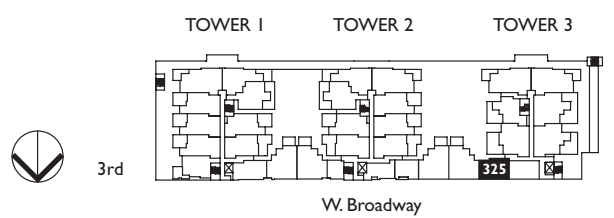
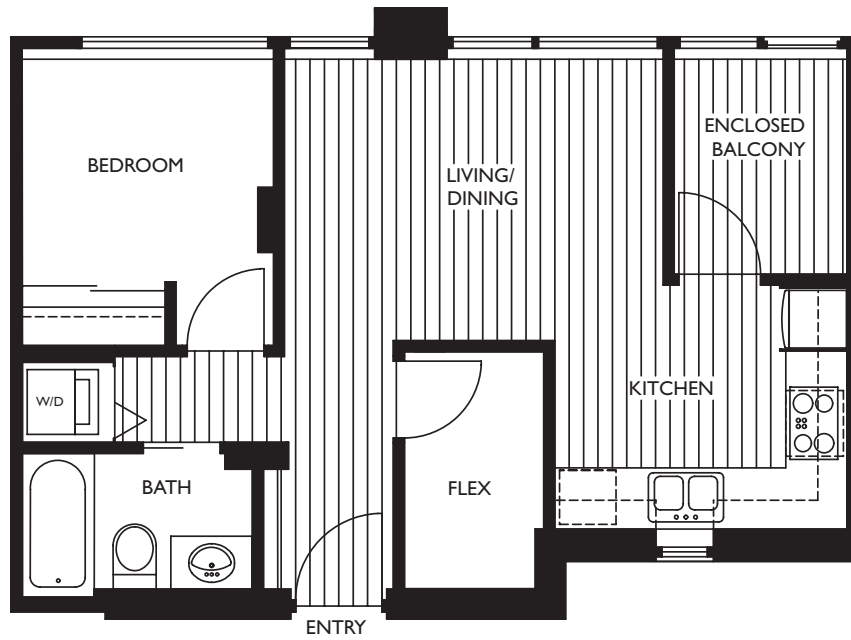




## Type PD-D

1 bedroom + flex

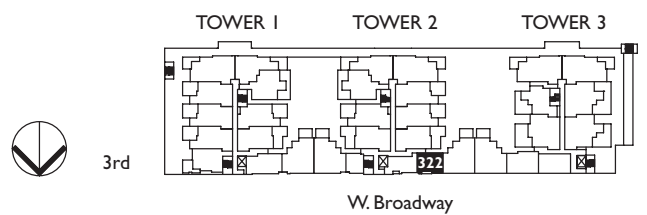
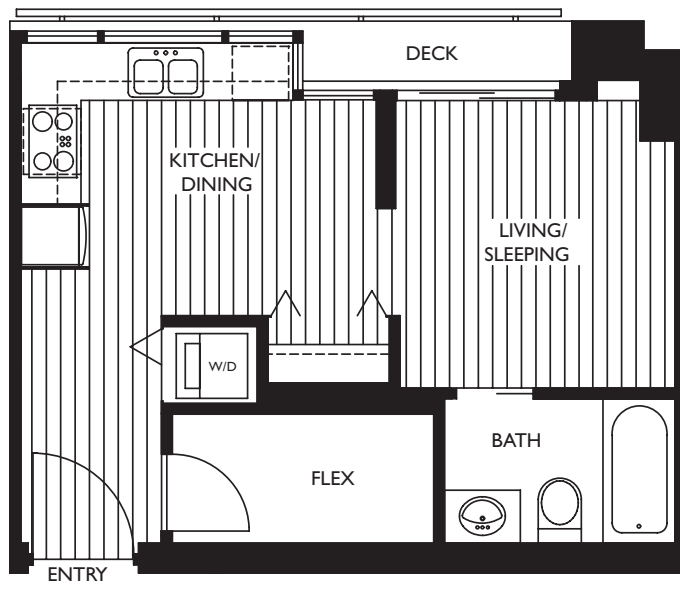
556 s.f.



## Type PD-E

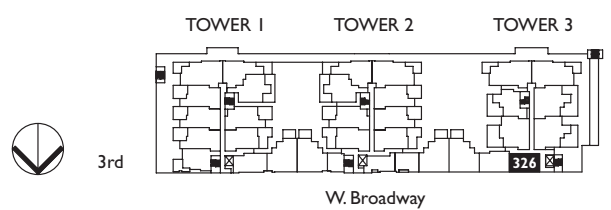
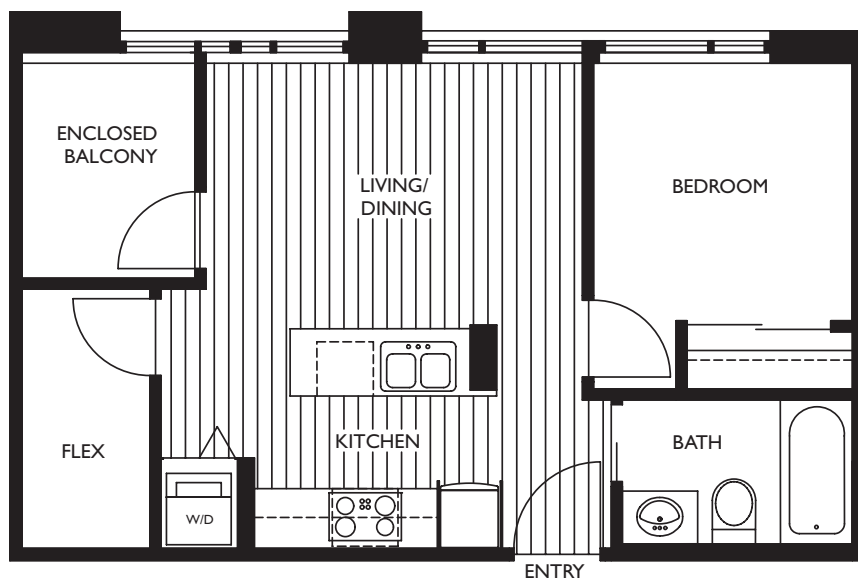
Studio + flex

406 s.f.



## Type PD-F

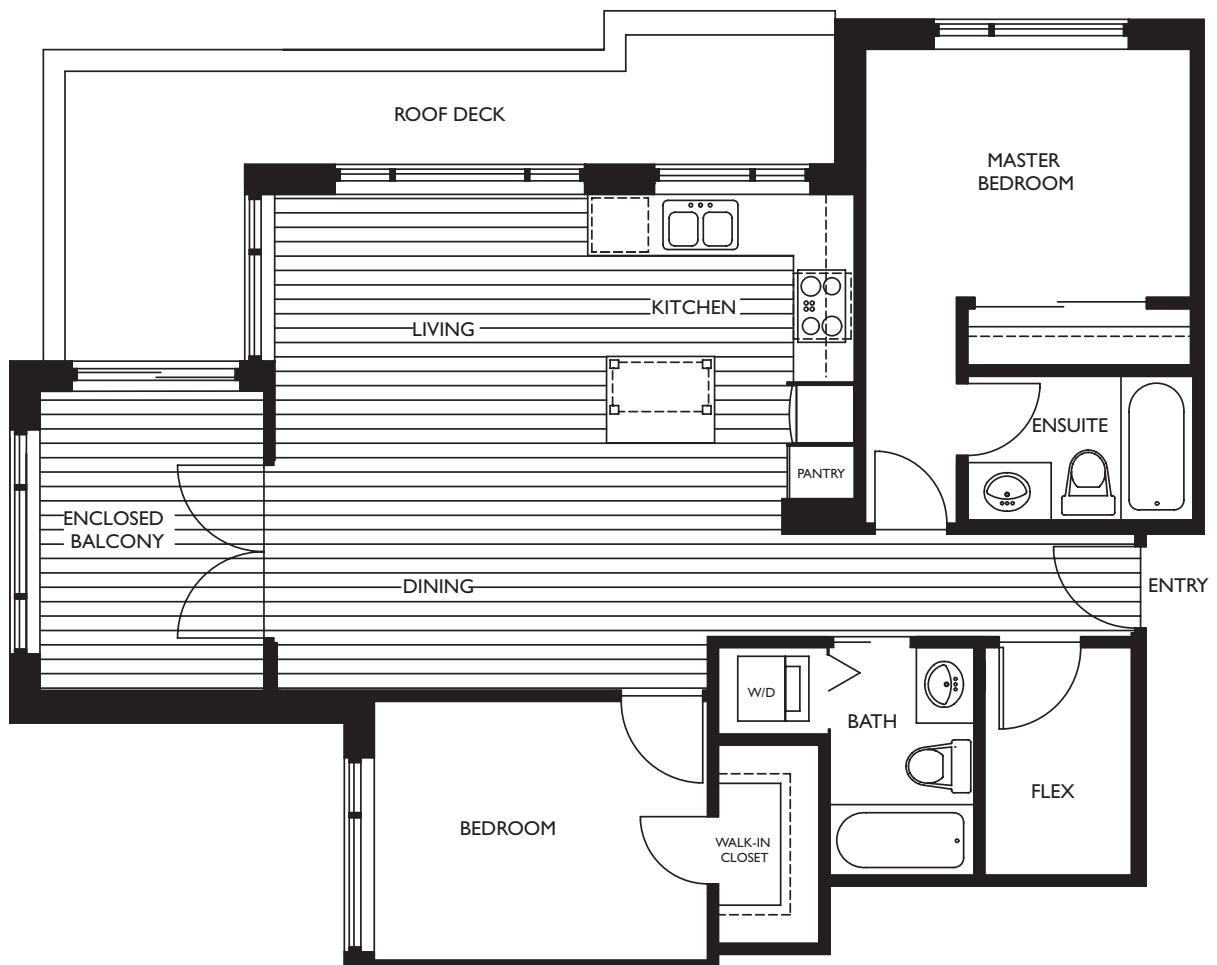
1 bedroom + flex  
519 s.f.



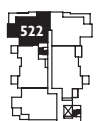
## Type PHA3

2 bedroom, 2 bath + flex

980 s.f.



TOWER 3



5th

W. Broadway

## Type PHCI

2 bedroom, 2 bath + flex

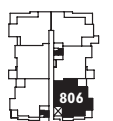
1,041 s.f.



TOWER I



8th



W. Broadway

## Type PHC2

2 bedroom, 2 bath + flex

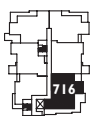
1,020 s.f.



TOWER 2



7th

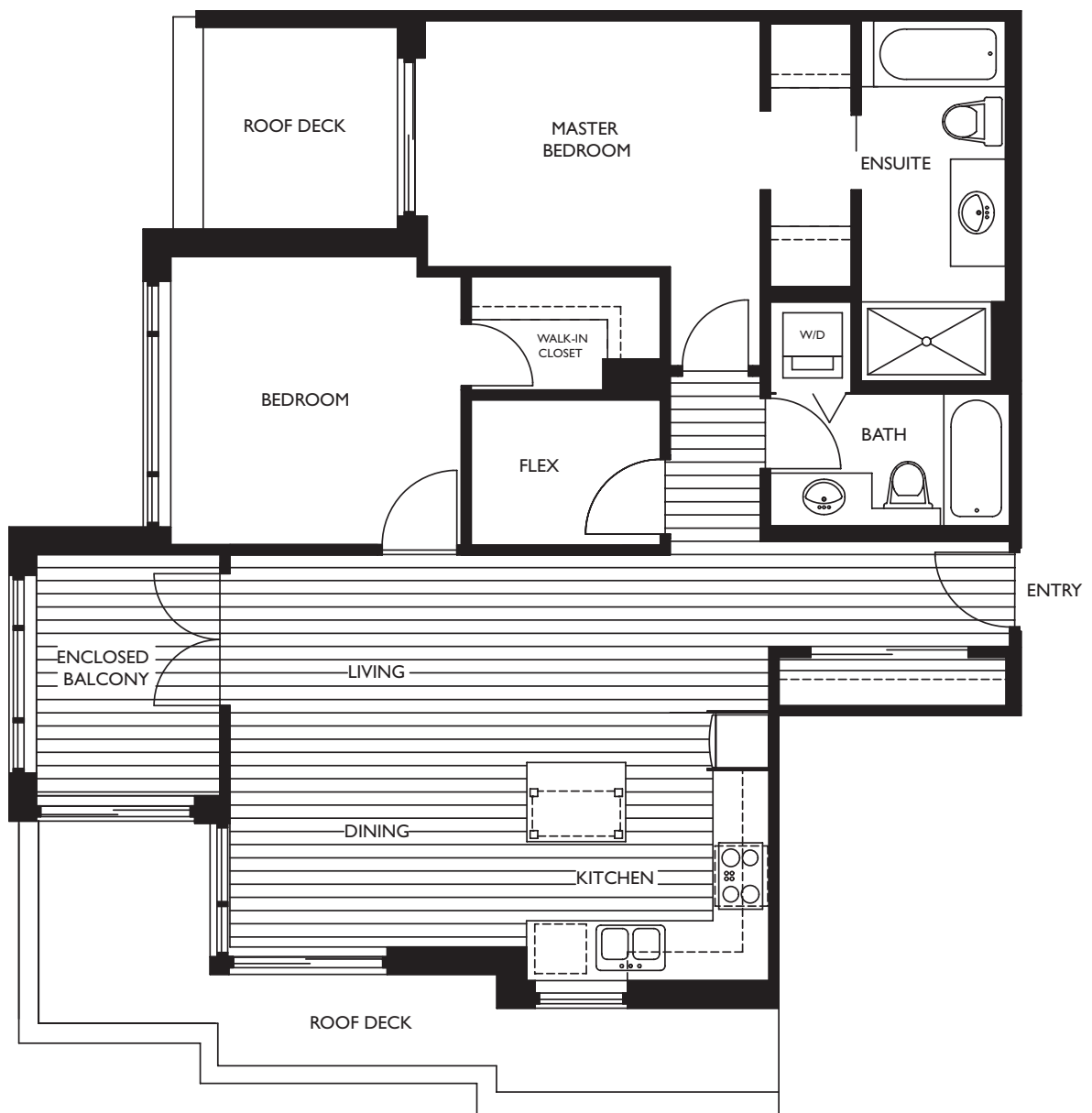


W. Broadway

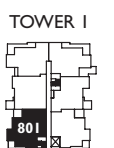
## Type PHC

2 bedroom, 2 bath + flex

1,071 s.f.



8th



W. Broadway

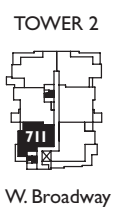
## Type PHD

1 bedroom + flex

777 s.f.



7th





## Type PHE

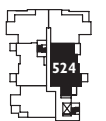
2 bedroom, 2 bath + flex

1,161 s.f.



5th

TOWER 3

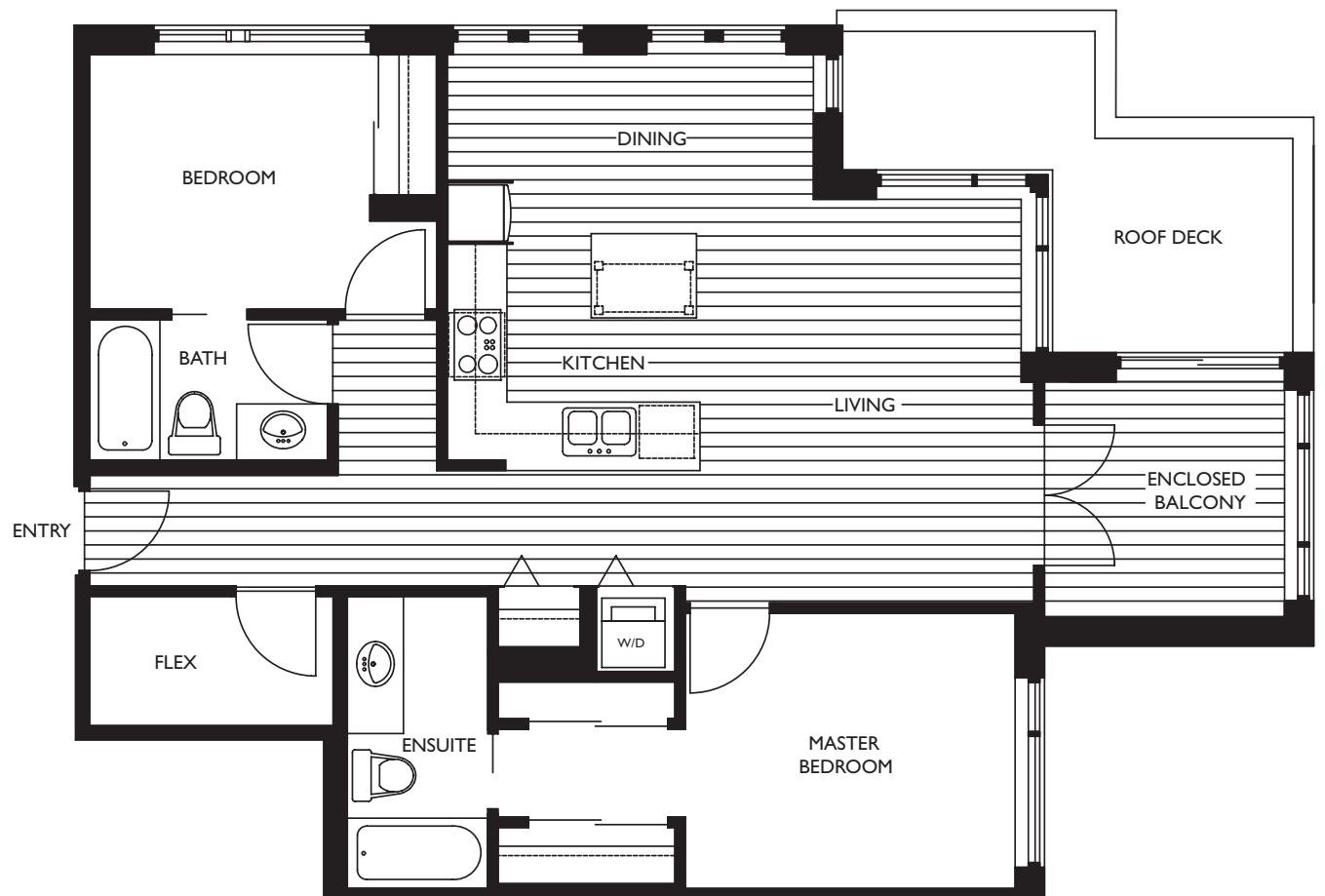


W. Broadway

## Type PHF

2 bedroom, 2 bath + flex

1,047 s.f.



5th

TOWER 3



W. Broadway

# You'll love living here

## Exciting exteriors

- Concrete construction with contemporary brick and glass accents
- Three individual towers from five to eight stories tall, providing exceptional upper level views to the ocean and mountains
- High performance, double-glazed windows with Low E coating

## Uncommon common areas

- Three custom lobbies designed by Jim Toy of False Creek Design Group
- Three elevators to suites, each with custom elevator cab
- Separate elevator to bicycle parking
- Wide corridors with custom in-set entry doors and specialty lighting
- Three seasonal roof gardens with community BBQ, jogging trail, and children's play area
- Amenity room

## Original interiors

- Luxury hardwood flooring on acoustic underlay throughout entry, kitchen, dining and living room
- Over-height ceilings (8.5 ft)
- Window coverings
- Designer painted wood baseboards and wood door casings
- 5-panel shaker wood entry door
- Matte chrome lever handle door hardware
- Textured loop carpeting in bedroom areas on rebound chip foam underlay
- Chrome frame, mirrored sliding closet doors (some plans)

## Functional and fashionable kitchens

- Islands with Lyptus butcher block top (some plans)
- Granite counter tops (Eco terr slab optional)
- Euro-style kitchen cabinets and stain grade wood doors
- Brushed nickel door/drawer pulls
- Single lever faucet with integral vegetable spray
- Double bowl stainless steel sink
- Under-cabinet lighting
- Lazy-susan corner cabinet
- Ceramic tile backsplash

## Appliances

- Garburator: 1/2 horsepower by Whirlpool
- Fridge: LG Titanium finish

- Wall Oven: 30" KitchenAid Architect style stainless steel built in convection
- Cook top: 30" KitchenAid Architect style 4 burner black ceran
- Dishwasher: KitchenAid Architect style fully integrated console
- Hood-fan: KitchenAid stainless steel slide out vent system
- Microwave: KitchenAid stainless steel c/w trim and built into cabinetry
- Stacking washer/dryer: Whirlpool full size 2 speed direct drive

## Beautiful bathrooms

- Tub: Hytec soaker tub by Kohler
- Toilet: Caroma dual flush low volume
- Sink: Eurolux under mount
- Counter top: granite (Eco terr slab optional)
- Porcelain floor tile
- Ceramic tile tub and shower surround with "Rock Pebbles" accent
- Satin nickel bathroom accessories: toilet paper holder, towel bar and robe hook

## Construction excellence

- Concrete construction
- Rainscreen technology
- Energy efficient insulation
- Double-glazed, sound absorbing windows energy saving with Low E glass

## Safe and sound

- Mortised deadbolt locking system to entry doors of each home
- Double locking patio doors
- Pre-wired for in suite security system (complete system optional)
- Smoke detectors
- Fire sprinklers
- Double gated secured underground resident parking
- Enter-phone system for visitor access
- Key fob entry security system and elevator for residents to individual floors
- Secured bicycle storage at residents parking area with key fob accessed bike elevator
- 10-year New Home Warranty

## Custom choices

- Ask our sales representative for a list of custom choices available for your new home.